



**MIDWEST**  
**Tool Expo**  
& Auction

MIDWEST  
*Health & Wellness*  
**EXPO**

**3 DAY SHOW!**

**January 23, 24 & 25, 2025**

The Michiana Event Center (MEC) 455 E Farver St., Shipshewana IN 46565

Sponsored By:



# MEC: MICHIANA EVENT CENTER

**455 E. FARVER ST.  
SHIPSHEWANA, IN 46565**

## TABLE OF CONTENTS

Accommodations .....	2
Events Info .....	2
Seminar Schedule .....	3
Seminar Speakers.....	4-16
\$25,000 Giveaway .....	17
Tool Expo Sponsors.....	18
Tool Sponsor Ads .....	19-62, 76-92
Tool Vendors Index.....	63-69
Tool Expo Booth Map .....	70-71
Health & Wellness Booth Map .....	72
Health & Wellness Vendors Index	73-75
Tool Vendor Ads.....	92-123
Health & Wellness Sponsors .....	124
Health & Wellness Sponsor Ads	125-137
Health & Wellness Vendor Ads	137-138

***midwesttoolexpo.com***

## 2025 EXPO

**\$5 Admission Fee**  
15 year olds and under: Free

**Thursday, January 23**

11 am • Expo Opens  
11:30 am • **SEMINARS START**  
7 pm • Expo Closes

**Friday, January 24**

8 am • Expo Opens  
9:30 am • **SEMINARS START**  
5 pm • Expo Closes

**Saturday, January 25**

8 am • Expo Opens  
9 am • **SEMINARS START**  
1 pm • Expo Closes

### **FOR EXPO INFO, CONTACT:**

Ervin Miller • 260.768.3033  
*midwesttoolexpo@outlook.com*  
Fax: 260.768.3133

## 2025 AUCTION

**Friday, January 24**

3:00 PM • Auction Begins

**Saturday, January 25**

9:00 AM • Auction Begins

### **FOR AUCTION INFO, CONTACT:**

Robert Mishler • 260.336.9750  
P.O. Box 67 • LaGrange, IN 46761  
*robert@schraderauction.com*

## ACCOMMODATIONS

**The Van Buren Hotel** 1175 North Van Buren (S.R. 5), Shipshewana, Indiana 46565  
Ph: (260) 768-7780 • [www.vanburenhotel.com](http://www.vanburenhotel.com)

**Blue Gate Garden Inn** 800 South Van Buren, Shipshewana, Indiana 46565  
Ph: (800) 545-4725 • [www.bluegategardeninn.com](http://www.bluegategardeninn.com)

**Super 8 by Wyndham** 740 South Van Buren, Shipshewana, Indiana 46565  
Ph: (260) 768-4004 • [www.wyndhamhotels.com](http://www.wyndhamhotels.com)

**Der Ruhe Blatz** 1195 South Van Buren, Shipshewana, Indiana 46565  
Ph: (260) 768-7750 • [www.therestplace.com](http://www.therestplace.com)

**Highfield Manor Bed & Breakfast** 2265 W 175 N, LaGrange, Indiana 46761  
Ph: (260) 585-0235 • [www.highfieldmanor.com](http://www.highfieldmanor.com)

**Holiday Inn Express Howe (Sturgis)** 45 W 750 N, Howe, Indiana 46746  
Ph: (260) 562-3660 • [www.gzghospitality.com](http://www.gzghospitality.com)

**Farmstead Inn** 370 South Van Buren, Shipshewana, Indiana 46565 • **(260) 768-4595**

**Mention Midwest Tool Expo or Midwest Health & Wellness Show for special rates!**

# SEMINAR SCHEDULE

## TOOL EXPO

### THURSDAY, JANUARY 23, 2025

- 11:30 - 12:45 ..... Dave Kauffman - *How to understand yourself and others better*  
1:00 - 1:45 ..... Indian Trail Tax Prep with Dennis Hershberger - *Financial Statements Mini-Workshop*  
2:00 - 2:45 ..... Gehman Accounting with Ken Nisly - *Overhead & Payroll*  
3:00 - 3:45 ..... Tyler & Associates with Don Tyler  
- *Solutions to Common Challenges and How to Get Started*  
4:00 - 4:45 ..... Sycamore Systems with Leon Yoder - *Productive Leadership*

### FRIDAY, JANUARY 24, 2025

- 9:30 - 10:45 ..... Dave Kauffman - *12 Essential Ways to Grow Your Business*  
11:00 - 11:45 ..... Fraud Aware with Darryl Weaver - *Scams, Scams & More Scams*  
12:00 - 12:45 ..... Sycamore Systems with Leon Yoder - *6 Types of Working Genius*  
1:00 - 1:45 ..... Tyler & Associates with Don Tyler  
- *How to Handle Common Objections in the Sale Process*  
2:00 - 2:45 ..... Gehman Accounting with John Zook - *Cashflow & Inventory*  
3:00 - 3:45 ..... Anabaptist Financial with Richie Lauer - *Setting Your House in Order*  
4:00 - 4:45 ..... Koble Systems

### SATURDAY, JANUARY 25, 2025

- 9:00 - 9:45 ..... Dave Kauffman - *Leadership: How to increase your influence as a leader*  
10:00 - 10:45 ..... Indian Trail Tax Prep with Dennis Hershberger - *Financials with a Vision*  
11:00 - 11:45 ..... Sycamore Systems with Leon Yoder - *Productive Leadership*

## HEALTH & WELLNESS EXPO

### THURSDAY, JANUARY 23, 2025

- 11:30 - 12:45 ..... His Saving Grains with Chris Bihn  
- *Health concerns when our body is not properly nourished*  
1:00 - 1:45 ..... Precious Tots Diapers with Lynda Miller  
2:00 - 2:45 ..... Valley View Health Clinic - *Auto Immune*  
3:00 - 3:45 ..... Vollara with Elsie Hochstetler - *Mold, Water, Laundry & Products*  
4:00 - 4:45 ..... NucleoGenex with Laura Oblon - *Gut health, DNA testing & "RED" Coffee*  
5:00 - 5:45 ..... Better World Botanicals with Israel Combs - *Why is the thyroid important?*

### FRIDAY, JANUARY 24, 2025

- 9:30 - 10:45 ..... Northern Nutrition with Jerry Christner, ND - *Build your own First Aid/Health Survival Kit*  
11:00 - 11:45 ..... Juice Plus with Dr. Mitra Ray (video), Orchestrated by: Velda, Mary Lou & Elnora  
*Fuel Your Day Right & Feel the Difference*  
12:00 - 12:45 ..... Immunity Therapy Center with Dr. Carlos Bautista - *Alternative Medicine Treatments*  
1:00 - 1:45 ..... Vista Life with Dr. Lebron & Corrinna Long  
- *Find out how to help prevent open heart surgeries & heart attack*  
2:00 - 2:45 ..... Better World Botanicals with Israel Combs - *Parasites and their Dangers*  
3:00 - 4:45 ..... The Wellness Way with Andrew Coblenz, Health Restoration Coach - *Hope for Hormones!*  
*How to understand & properly test them*

### SATURDAY, JANUARY 25, 2025

- 9:00 - 9:45 ..... Northern Nutrition with Mark Byler, ND - *A "Round Up" of Health Hazards caused by weed  
killers in our foods*  
10:00 - 10:45 ..... Versiti Blood Center of Indiana - *The Current State of Blood Supply*  
11:00 - 11:45 ..... Vista Life with Dr. Lebron & Corrinna Long  
- *Find out what happens to a pill before you get it*

# Setting Your House In Order

SEMINAR

For families that ought to be preparing for the end and for worried children who are sure their *parents aren't preparing*.

This topic is presented by **Richie Lauer** from Hillsville, Virginia. Richie serves as Anabaptist Foundation's Charitable Gift Fund manager. If you are a reader of Plain Communities Business Exchange, you probably have seen his Mountain Meditations column which he writes on a monthly basis.



Stop by the AF booth to pick up your free copy of the new Amos and Mandy book, *Do What Is Right*.



Anabaptist  
Foundation

55 Whisper Creek Drive  
Lewisburg, PA 17837  
800-653-9817 | [info@afweb.org](mailto:info@afweb.org)



# DAVE KAUFFMAN

Discover. Improve. Strengthen. Connect.



**Top 100 Keynote Speaker | Mentor  
to High Achievers | Best Selling  
Author | Human Behavior Expert**

As a Master Trainer (1 of only 10 in the world) of the DISC model of human behavior, Dave Kauffman has helped thousands of business leaders around the world discover freedom in leadership and relationships through his engaging, entertaining, and inspiring keynotes and training workshops.

**SEMINAR**

## Join Dave's Keynotes At The Midwest Tool Expo

Jan. 23 (11:30 AM) - DISC: How to understand yourself and others better

Jan. 24 (9:30 AM) - 12 Essential Ways to Grow Your Business

Jan. 25 (9:00 AM) - Leadership: How to increase your influence as a leader

## DISCOVER Your POTENTIAL

With Dave's Proven Business  
Coaching that WORKS



- 5 Coaching Packages Available
- Certified Business Coaches
- Weekly Exercises
- Monthly Trainings
- *And many more benefits*



[davekauffmanspeaks.com](http://davekauffmanspeaks.com)



813-580-8920

# DON TYLER



TYLER  
& ASSOCIATES

SEMINAR



*“Helping employers, employees and families work better together.”*

## Don's Presentations at The Midwest Tool Expo

**Jan. 23 (3:00 PM) *Succession Planning: Solutions to Common Challenges and How to Get Started:***

*It's never too early to start developing the next generation of leaders and managers for the family business. Strategic transition planning can prevent common challenges and build teamwork among family members.*

**Jan. 24 (1:00 PM) *Sales Challenges: How to Handle Common Objections in the Sales Process:***

*Buyers of our products and services will commonly throw out objections during the sales process. “The price is too high...” “It sounds good, but now isn't a good time for me to spend that kind of money...” “I can get it cheaper from XYZ...” “I know it's a good deal, but I've been buying it from my wife's cousin for 15 years...” We will discuss how objections fall into three basic categories, and how each requires a different approach.*

Don Tyler grew up on a family farm, managed businesses for 16 years, and since then has been a management and executive coach for nearly 30 years working with hundreds of family businesses across the country. This experience, as well as being a certified biblical counselor, allows him to bring his unique perspectives and solutions to those he serves.

[don@dontyler.com](mailto:don@dontyler.com) | [www.dontyler.com](http://www.dontyler.com) | 765-490-0353

# Scammers and Their Tricks

## FREE SEMINAR! "Scams, Scams and More Scams"

FRIDAY, JANUARY 24TH - 11:00 AM

Learn how Fraudsters use fear, emotional manipulation and urgency to trick you! Scams are costing our plain communities many thousands of dollars!

SEMINAR



*Attend this Seminar or Visit our Booth  
to pick up your FREE BOOKS!*

Thanks to generous donors, you can pick up  
FREE books at the Midwest Tool Expo. *Don't miss this opportunity!*



**Fraud  
AWARE**

*Pick up FREE literature on investment fraud,  
gift cards, IRS, grandchild, counterfeit  
postage stamp and many other scams.*

**Phone or Text: (717) 740-2790 or [info@FraudAware.us](mailto:info@FraudAware.us)**

**Fax Number: (717) 222-5266 • P.O. Box 34, Ephrata, PA 17522**

**Web: [www.FraudAware.us](http://www.FraudAware.us)**

*A conservative Anabaptist resource for fraud  
identification, education, and prevention.*



SEMINAR



**Gehman**  
Business Advisors™

*Inspiring Confidence™*

## Seminar Presentations

### ***Ways to Survive an Economic Downturn***

Learn why managing key financial basics is essential to riding through economic turbulence.

#### **Part 1 - Overhead & Payroll**

*by Ken Nisly*

on Thursday, Jan. 23 at 2 pm



#### **Part 2 - Cashflow & Inventory**

*by John Zook*

on Friday, Jan. 24 at 2 pm



***Stop by booths 537-538. We would love to chat!***

***Guidance to transform your business***

**717.355.9723 • [www.gehmanaccounting.com](http://www.gehmanaccounting.com)  
[businessadvisors@gateam.com](mailto:businessadvisors@gateam.com)**





# SEMINAR

JAN 23RD, 4:00-4:45 PM

## "PRODUCTIVE LEADERSHIP"

Getting better results with less effort.

JAN 24TH, 12:00-12:45 PM

## "WORKING GENIUS"

Leveraging the strengths and identifying the gaps in your team.

JAN 25TH, 11:00-11:45 AM

## "PRODUCTIVE LEADERSHIP"

SEMINAR



**SYCAMORE**  
SYSTEMS, INC

Leon Yoder is an entrepreneur, writer and business consultant helping business leaders implement systems and develop their people.

Ph: (574) 400-5844 • [disc@leonyoder.com](mailto:disc@leonyoder.com)





**SEMINAR**

# Seminar Topics with

**Friday, Jan. 24, 2025; 1:00 PM**

How to avoid heart attacks and open heart surgery - find out the condition of your heart and arteries



**Dr. Lebron Long**



**Dr. Corrinna Long**

**Saturday, Jan. 25, 2025; 11:00 AM**

Sneak Peak of a natural pill manufacturer facility - come and hear what happens before the pill gets to you

**Questions? Call: 716-488-6706**



## Health & Wellness Expo - 2025 Seminar

Call us: (USA): +1 (619) 929-3430  
 info@immunitytherapycenter.com  
 Blvd. Padre Kino #10133, Zona Rio,  
 Tijuana B.C. México, 22010

### Alternative Medicine Treatments

More than Alternative Medicine to Help You Fight Your Battle with Cancer and Other Diseases.

Dr. Bautista will present ITC - Immunity Therapy Center and the variety of natural, effective, alternative treatment options for cancer and other diseases. Every patient's health and disease are different. Multiple holistic treatment options and the ability to combine them in a customized treatment program gives to the patient the best chance of an enhanced quality of life, improved prognosis, and remission.

#### Dr. Bautista - Bio

Dr. Bautista is a Board Certified Medical Doctor, he received his medical degree from Universidad Autónoma de Baja California, Mexico.

Dr. Bautista began his medical career in 1994, working in a hospital that offered alternative medicine treatments. A turning point in his life occurred when his father was diagnosed with cancer.

As Dr. Bautista watched his father suffer the effects of chemotherapy and radiation, he was driven to further study alternative cancer treatments, both for his father and for other cancer patients.

Dr. Bautista is a dedicated and passionate Doctor whose life's mission is to help patients. He has been working for more than 25 years with Alternative Medicine to treat cancer, autoimmune diseases, chronic degenerative diseases, infectious diseases and Lyme disease.

**SEMINAR**



For over 25 years Dr. Bautista has been treating patients from the Amish community with remarkable results.

THURSDAY  
January 23  
4:00 PM

SEMINAR

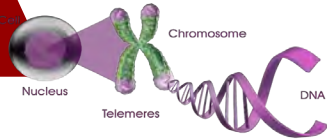
# The importance of GUT HEALTH



NucleoGenex

Speaker: Laura Oblon  
Owner of Nucleogenex

Why DNA testing  
could save your life



PARASITES

Gold Sponsor

THE WELLNESS WAY

# Hope FOR HORMONES

SEMINAR



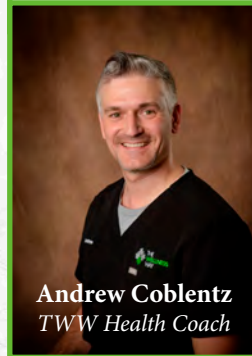
Friday

January 24, 2025

3:00 PM

*Hope for  
Hormones*

How to Understand  
& Properly Test Your  
Hormones!



Andrew Coblenz  
TWW Health Coach

Booths 39 - 40, 103 - 104

11

# NORTHERN NUTRITION

HERBS & VITAMINS

SEMINAR

Silver Sponsors

“Build your own First Aid / Survival Kit”

Friday @ 9:30-10:45 - Jerry Christner, ND

“A ‘Round-Up’ of Health Hazards Caused  
by Weed Killers in Our Food

Saturday @ 9:00-9:45 - Mark Byler, ND

**COME SEE US AT BOOTH # 34-35  
FOR 20% OFF ALL PRODUCTS AT EXPO!**

**PRESENTER: JP LANNING**  
Presenting on the state of the Blood Supply.

*Be a Beacon of Hope*

When you donate blood with Versiti  
Blood Center of Indiana, you impact the lives  
of local hospital patients in need, possibly even  
someone you know.

SEMINAR



Scan to  
donate blood.

 **versiti™**  
Blood Center  
of Indiana

Bronze Sponsors

# BETTER WORLD BOTANICALS

STAY HEALTHY WITH IMMUNE SUPPORT, RESPIRATORY SUPPORT, VITALITY, AND MANY MORE!

## Home of THE LITTLE MONKEY PRODUCTS



### Why is the thyroid important?

**Thursday, January 23, 2025 at 5:00 PM**

In this short lecture we will explore what made such a massive attack on the organ that controls our energy, our temperature, and makes sure we get a good night's sleep. We will also explore what can be done to restore thyroid health and what the eventual costs will be if we don't.

### Parasites

**Friday, January 24, 2025 at 2:00 PM**

We will be teaching a class about parasites. We will discuss the real dangers that exist and we'll explain some of the hype. We'll talk about the history of parasites and some of the ways they were discovered. Most parasites are microscopic which means you can't see them with the naked eye. This makes discovering them that much more difficult and interesting.

**SEMINAR**

Speaker – Israel Combs

Israel has been in the natural health industry for nearly 30 years, he has been in the medical and natural side of health and prefers the natural way because of the high level of satisfied customers.

*Courtesy of*

**D & W Natural Products**  
**David & Waneta Hochstetler**

4940 W 400 S Topeka, IN 46571  
P: 260-383-2061 • F: 260-383-2041



We offer many combinations to tackle all your health problems. **Call for a free consultation and recommendation.**



**SEMINAR**

Chris Bihn from His Saving Grains will be presenting on the new technology of whole cell crushed grains and how it benefits our health by retaining the natural nutrition instead of adding man-made nutrition while eliminating

the need for any chemicals during the crushing process to extend the shelf life. The technology does not kill or evaporate the natural nutrition either. This will alleviate inflammation due to chemicals in your food source. Gluten issues, diabetes, leaky gut and many other health issues can now be looked at in a new light for preventative measures. This reactivates the God-created technology of dietary fiber and complex carbohydrates being invaluable to your health. We focus on chemical free and nutrient dense grains and foods as we retain 100% of the nutrition a farmer puts in the grain. Chris will present information on creation and how our bodies are designed to handle nutrition and how synthetics can cause inflammation and other health concerns when the body is not properly nourished.

  
**vollara**<sup>®</sup>  
PRODUCTS

**Tobe & Elsie  
Hochstetler**

**260-593-0413**

**January 23, 2025 • 3:00 PM - 3:45 PM**

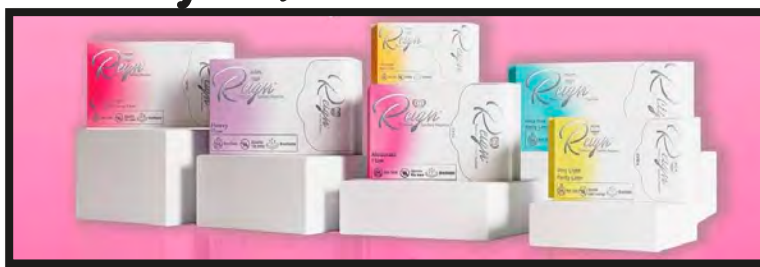
For the seminar on Thursday, I will be talking about clean air and water, also on nutrition of the whole food supplements!

**SEMINAR**



# Reign Sanitary Napkins

SEMINAR



Are you aware of the toxic chemicals that are in your personal care products?  
Come join us to learn more!

## Precious Tots Diapers

Completely **SAFE**  
for your little one!

**FREE OF**

Chlorine	Allergens
Bleaching	Latex
Dyes	PVC
Fragrance	Phthalates
Alcohols	TBT
Lotions	Preservatives
Parabens	Dioxins



**Super absorbent diapers designed for the comfort of your little ones!**

**Join us for a seminar on Thursday at 1:00!**

**For more information contact:**

Lynda Miller  
311 E Main Street  
Odon IN 47562

**Ph:** 260-585-7599  
**Email:** [lyndaruth93@outlook.com](mailto:lyndaruth93@outlook.com)

# JUICE PLUS

SEMINAR

## A Long Life is not Enjoyable if we are Sick, Tired, and Unhealthy.

Come join us to learn the secret to an enjoyable and fulfilling journey.

Dr. Ray is a woman on a mission & fiercely committed to be a trusted guide for those who love life, those who want to be healthy, fit, and gorgeous with practical and doable solutions that are easy on your wallet in these changing and busy times.

With over 30 years of experience she's helped people have remarkable success in looking and feeling better.

Dr. Ray achieved and received her bachelor of science at Cornell University and PhD from Stanford medical school, she's the recipient of many grants and investors award from the federation of American societies and experimental biology.

Many have enjoyed her award winning books, audios, and lectures on health, beauty, brain function, and longevity. Commitment is to revolutionize wellness through her innovative neural emotional technology and plant based nutrition. Her latest book "do you have the guts to be beautiful" was featured in women's health and is available to anyone on Amazon.

It is Dr. Rays commitment to empower you with health information that can really make a difference in your life.



Valley View  
HEALTH  
-CLINIC-

(David Keim)

SEMINAR

**GI Map Test - Gut Health**  
**Dutch Test - Hormones**  
**Lymes Test - Auto Immune**



# **\$25,000**

## **EXPO GIVEAWAY**

Drawing Saturday Noon

*Need not be present to win. Winners posted at main entrance.*

**\$25,000 giveaway with \$5,000 cash given away on Thursday, January 25th.**

...

**Also on Thursday, every 23rd attendee will win a prize.**

...

**\$5 admission fee will apply to enter expo & auction!**

*15 year olds and under free to Expo and Auction.*



**MIDWEST**  
**Tool Expo**  
**& Auction**

# SPONSORS

## Platinum Sponsors



## Gold Sponsors

A&M Kiln Dry	Heritage Acres Paints & Supplies	ProTech Water LLC
Accessa	Home Matrix	Sherwin Williams
Arrow Industrial Sales	JKL Machinery	Sierra Forest Products
AW Machinery	Job Tamer	Simple Roof Solutions
B&B Machinery	Koble Systems	Stiles Machinery
Circle T Manufacturing	LaGwana	Stoll Brothers
Cornerstone Business Printing, LLC	Lancaster County Showcase	Winner Woodworking
David E. Easterday & Co/ Woodwright	Miller Lumber	Wolverine Hardwoods
Hafele America Co.	PCBE	Würth Baer Supply Company

## Silver Sponsors

Arthur Distributor Company	Dynabrade Power Tools and Abrasives	L&J Companies
Barnyard Marketing	Empire Express	Richelieu Hardware
Buckeye Hardware	EPCO Sales Inc	Shur Ply
D&M Plywood	Hardwood Designs	Silvercraft
D.A. Hochstetler & Sons	Highland Automation	Stoll Steel Buildings LLC
	Knape & Vogt	Superior Edge
		Trade Express

## Bronze Sponsors

ABC Saw & Tool Inc.	Hydro Heat Inc / Otto Stove & Fireplace	Quality Plastics LLC
Anabaptist Brotherhood	IdentiGrow by Blue Ridge	Sandman Products
Bad Dog Tools	Impressions Inc	Sonshine Baskets
Boon Books	Iron Bull MFG LLC	Spruce Lawn Industries
Clearview Roofing	Logivision Technologies	Star Home Center
Complete Design	Microvellum	Starlight Unlimited LLC
Costa Sanders	Miller Power LLC	Straightline Enterprises
County Line Concepts	Newbury Carriage	Sunrise Enterprise
Hardwoods Specialty Products	Nighthawk 3D	Tru-Kote Roofing Systems
Holmes Printing Solutions	Plain Press	Zimmerman Design



www.alphabuildingcenter.com

**FROM THE FOUNDATION  
TO THE ROOF OF YOUR  
HOUSE, SHOP, OR BARN,**

*We are here to help you!*



**YOUR ONE STOP SHOP  
FOR ALL THE TOOLS YOU NEED.**

**BOSS**  
HAMMERS

**prevost**

*Milwaukee*

**DYNABRADE**

**CENTURY**  
TOOLS

**IR**  
Ingersoll Rand

**WTG**  
WEAVER TOOL GEAR

**Makita**

**GRACO**

**SawStop**

**SPOTNAILS**

**MILTON**

**Kreg**

**Paslode**

**DIABLO**

**SENCO**

**OLIVER**

**MAX**

**DEWALT**

**SHIPSHEWANA**

(260) 768-4410

0855 N SR 5 Shipshewana, IN 46565

**NAPPANEE**

(574) 773-7787

8270 W 1350 N Nappanee, IN 46550

**NOTTAWA**

(269) 467-4800

26250 M-86 Sturgis, MI 49091

Booths 241 - 252, 303 - 314

Platinum Sponsor

# A Powerful Partnership, Reimagined



**What do you get when two leading industrial coatings brands team up?**

**You get to relax & enjoy the convenience of our one-stop shop.**

FinishWorks & Mohawk have formally joined forces as a single company - FinishWorks - to bring you an innovative team with a full range of products.

***mohawk***<sup>™</sup>

Mohawk will be our premier brand for touch-up and repair products, while FinishWorks will be the home to our exceptional coatings products.

**SUPPLYshop**<sup>™</sup>  
BY FINISHWORKS

Supply Shop is our brand-new home for sundries, equipment, and everything else you need to finish your job right.

***We're working hard to make sure you get all the way across the finish line.***

visit us online:  
**FinishWorks.com**



# KC INNOVATIONS

We strive to be leaders in reliable off-grid power and lighting solutions while enhancing the lives of our partners and communities. We aim to produce innovative, high-quality products for plain, camping, and off-grid communities, honoring God and helping distributors build sustainable local businesses. Continuous innovation with Christ-like integrity; *that's KC Innovations.*

Platinum  
SPONSOR



*Building Tomorrow's Solutions,  
With Traditional Values.*



**FIND OUR INNOVATIVE PRODUCTS  
AT YOUR LOCAL KC DEALER.**

BECOME A DEALER: 888-290-8920 or [sales@kc-innovation.com](mailto:sales@kc-innovation.com)

Platinum Sponsor

**SPECIALIZING IN  
KILN DRIED LUMBER**

**VISIT US AT  
THE MIDWEST  
TOOL EXPO**

**BOOTHS 235-236**

1711 County Road 200  
Dundee, OH 44624  
330-852-0505



---

**A&M KILN DRY, LTD**

---

*Honesty, Quality, Service*  
**GUARANTEED**

Gold Sponsor



Gold Sponsor

When you need to trust  
your **coatings** and **equipment**,  
trust Accessa.

**Our top-performing product lines include:**

- ▶ Solvent and water-based coatings for metal, plastic and wood
- ▶ Surface treatment, metalworking and specialty chemical products
- ▶ Tools and equipment to help you get the best results possible



800.593.0126 | [accessa.com](https://www.accessa.com)

We are excited to be with you here at **Midwest Tool Expo & Auction**. Please stop by to learn how Accessa helps teams like yours take on every challenge.

Booths 253 - 254, 301 - 302

# INDIANA'S ONLY STOCKING DISTRIBUTOR OF INTERLAKE PALLET RACKING



**Self Dumping Hoppers**



**Pallet Racking**



**Cantilever Racking**



**Aluminum Tanks**

Gold Sponsor



230 N Wabash St • Millersburg, IN 46543

**OFFICE: 574-349-6575**

**FAX: 574-349-6293**

[sales@arrowindustrialsales.com](mailto:sales@arrowindustrialsales.com)







COMPACT MOULDER SERIES



CN600 CNC DOVETAILER



C12RSH 12" RIPSAW



RM100 MINIMOULDER



PCS14L 14" CUT-OFF SAW



PW120E OSCILLATING EDGE SANDER



AIRSTREAM SANDER



ROBOTIC FINISHER



TSM35 POCKET HOLE MACHINE



CS1.5 POCKET HOLE MACHINE



HELI 5,000 LB. FORKLIFT



SW200 200 SERIES 3-HEAD WIDE BELT PLANER/SANDER

**TAKE ADVANTAGE OF SHOW SPECIALS!  
 SAVE ON BOOTH MACHINES!**

**SEE THESE MACHINES AT OUR BOOTH**

# B & B MACHINERY, CO. INC

Sales & Service of Woodworking and Panel Processing Machinery

Castle Family Of Pocket Cutters



**TigerStop®**



CIRCLE T MANUFACTURING



Gold Sponsor



**JLT Clamps'  
Mid-West  
Premier  
Stocking  
Dealer**

821 Windsor Ave Unit D  
Elkhart, IN 46514  
info@bbmachinery.com

**Come see us  
at booth  
901-910**

(574) 262-4115 office  
(574) 262-4525 fax  
www.bbmachinery.com

# CIRCLE T MANUFACTURING

## BOOTH 927-930

EASY Lock Miter LM116



EASY Coping Machine C220 - Quick Change!



**NEW!** LSC23 EASY Slide  
Clamp for the LM116 - RUN  
SMALL PARTS!!!

EASY Drawer Notcher M312



EASY Coping Machine C117 - Quick Change!



Easy Quick Change Spindles - Included with both coping machines!



Committed to Care, Quality, and Service

**MADE IN THE USA!!!**

PHONE: 815-601-1212

FAX: 800-647-9616

EMAIL: EasyLockMiter@gmail.com

WEB: EasyWoodworkingMachines.com

Gold Sponsor

# PROMOTE YOUR BRAND

Laser Engraving & Personalization.

# YETI



Gold Sponsor



801 Wayne St. Suite 11  
Middlebury, IN 46540  
Ph: 574-316-7020 Fax: 574-642-4059  
promo@cornerstone.info  
www.cornerstonebusinessprinting.com



QUALITY WOOD FINISHING PRODUCTS

PROUDLY MANUFACTURED



IN HOLMES COUNTY, OHIO



**ARMORVAR**

**ELITE**

FORMALDEHYDE FREE CATALYZED VARNISH

**100%**  
**Formaldehyde**  
**Free**



A true conversion varnish without the common Eye/Nose Burn. Ready to deliver in a few days with no lingering odor.

**EasyWipe**  
STAIN TECHNOLOGY

Provides rich, deep, brilliant colors in one easy application. Available in any custom color as well as thousands of colors on file.



**ENDUROTHANE**

PREMIUM URETHANE FINISH

A high build acrylic urethane designed specifically for wood. Capable of providing a full fill, mirror look finish.

We manufacture all the wood coatings you need, from U.V. Cure Finishes to Hand Rubbed Oil Finishes and anything in between, as well as custom products made to work in YOUR production line. Please contact a Woodwright Rep. to find the products you are looking for.



While at our booth, be sure to check out the new  
**WOODWRIGHT SELECT COLLECTION**

The set features 40 of both our most in-demand stain & paint colors available on several different wood species.

DAVID E EASTERDAY & CO., INC.

PHONE: 1.800.322.8172

HEADQUARTERS: 1225 US ROUTE 62, WILMOT, OH 44689

[WWW.WOODWRIGHTFINISH.COM](http://WWW.WOODWRIGHTFINISH.COM)

Booths 333 - 334, 421 - 422

Gold Sponsor

# HÄFELE

Häfele America Co.

**HÄFELE Branded  
"ELEMENTAL  
WOOD  
ACCESSORIES"**

BASE PULL-OUT

WASTE BIN |  
PULL-OUT

POLE MOUNT  
LAZY SUSAN

SHELF MOUNT  
SUPER SUSAN



ORDERING IS EASY AND CONVENIENT

**BRIGHTER. BOLDER. BETTER.**



**HÄFELE  
LIGHTING:**

COB (Chip On Board)  
Gold and Complete

Our **Häfele  
Lighting System**  
was designed to be  
the most designer  
and installer-  
friendly LED  
lighting system  
available in  
the industry.



**HÄFELE** - Everything for  
your cabinets...except  
the wood!

**Knowledgeable  
Sales and Support**

Häfele America Co. | 1.800.423.3531 | [www.hafele.com](http://www.hafele.com)

Gold Sponsor





# Envista Urethane

- Low Odor
- Water Based
- Non-flammable
- Easy handling



**Flowcast • Pourover • Pigments • Supplies**

**Heritage Acres**

**Paints & Supplies**

**260-593-0145**

**Look us up for the  
show special!**

# Quality products you can depend on ...Just a phone call away



**Come see us at the  
Midwest Tool Expo  
Booths 445-448,  
461-464 and 507-510!**

Gold Sponsor

**HomeMatrix**  
BUILD DECISIVELY

**DYNAMIC**  
FINISH SOLUTIONS

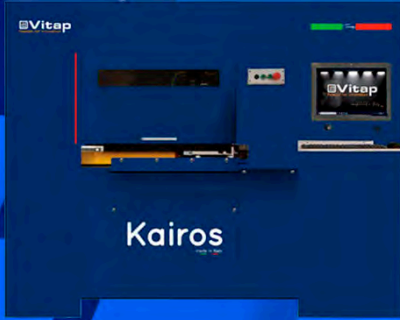
A Division of HomeMatrix

p: 574-301-7121 | f: 574-301-5365 | e: [customerservice@homematrixus.com](mailto:customerservice@homematrixus.com)



# JKL Machinery

Machinery and Systems Solutions



 Vitap



 **CASADEI**  
MACCHINE

 **BUSELLATO**  
CNC



[www.JKLMachinery.com](http://www.JKLMachinery.com)

248-491-3511  
[machinesales@JKLMachinery.com](mailto:machinesales@JKLMachinery.com)

Gold Sponsor



**JOB TAMER**

Gold Sponsor

## READY TO TRANSFORM YOUR WORKSPACE?

Our storage solutions offer the ultimate in versatility and organization.

- **PACKOUT™ Stations** with an accessible slide-out drawer system for Milwaukee organizers and toolboxes.
- **Adjustable Spacer Bins**, stackable for pallet racking or mobile use.
- **Pallet Racking** with adjustable bins for small parts.
- **Roll-Around Workstations** featuring bins, shelving, and benches.
- **LocHook-Compatible Organizer Boards** for versatile tool management.

**Call For More Information: 260-768-7336**

1085N 850W, Shipshewana, IN 46565 Email: [delmer@jobtamer.com](mailto:delmer@jobtamer.com)

**GOLD SPONSOR**

**ALWAYS IMPROVING OUR BEST**



**Get Quality!**  
**Get Great Customer Service! Get Creative!**

PO Box 70 • Shipshewana, IN 46565 • P 260-768-7878 • LaGwana.com

Gold Sponsor



# WHY CHOOSE THE CONNECTION

FOR YOUR 2025 ADVERTISING SOLUTION?

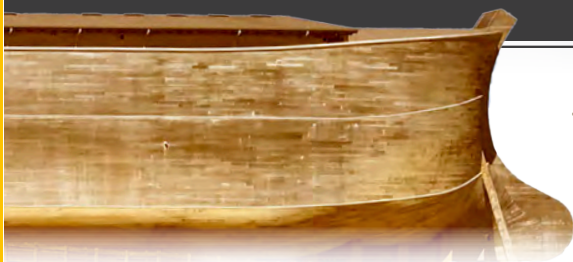
**Focus:** Connecting wholesale buyers with American furniture, decor, and outdoor product manufacturers.

**Audience:** 9,860+ wholesale buyers, retail stores, and interior designers from across America.

**Distribution:** Direct mail, email list, and website.

**Advertisers:** Manufacturers of American-made furniture, decor, outdoor products, and industry suppliers.

Reserve ads in all three 2025 editions for a chance to win one of these gorgeous prizes!



**PRIZE #2**

**Two Quest Canyon Kayaks**  
(\$1,000 value)



**PRIZE #1**

**Three Day Vacation For Two**  
Niagara Falls, Ark Encounter, or other tour of equal value!  
(\$2,000 value)

**PRIZE #3**  
**Fishing Lines and Loaded Tackle Box**  
(\$350 value)



To get started call 717.687.8150 or send an email to [info@LancasterCountyShowcase.com](mailto:info@LancasterCountyShowcase.com)

# PECKY RUSTIC HICKORY

A choice your  
customers will  
remember!



Stop by our booth  
at the Midwest Tool  
Show to see what  
we can offer you!

Wide, pecky and full of character is what you get with every board. This isn't your typical rustic hickory! With a rich brown color, dark streaks, and distinctive pecky texture, this stock is sure to set your product apart. Perfect for cabinets, furniture, and molded products, it adds a standout touch to any piece.

- Large In-Stock Selection
- Domestic & Imported Wood
- Reasonable Delivery Rates
- 4/4-12/4 In Stock

For a quote, call  
**(260) 463-3461**



**Miller Lumber**  
*your local lumber source*

3070 W 100 N • LaGrange, IN 46761

Regular Deliveries To: Ohio | Pennsylvania | Illinois | Michigan | Kentucky | Missouri | Iowa | Wisconsin

Gold Sponsor

# PCBE

**PLAIN COMMUNITIES BUSINESS EXCHANGE**

*Our mission is to provide plain communities with Kingdom-focused business teachings and helpful connections through a monthly print magazine.*

Gold Sponsor



**Subscribe or Advertise**

*phone: 717.362.1118*

# Come See Us At Our Booth #133-134

We would love to talk to you about water!



**10% off**  
All Water  
Treatment Systems

**0% interest**  
for 12 months

- ◁ Commercial ▷
- ◁ Residential ▷
- ◁ Agricultural ▷

We Offer Free Water Testing!

260-768-7228  
110 S. Babcock St. | Topeka, IN 46571

**ProTech**  
**WATER, LLC**

*“Water is Life, Treat it Right”*



# FAST AND PRECISE COLOR DELIVERY

The Sherwin-Williams Color Express™ system is your solution for quick and accurate color. With thousands of colors to choose from, this system delivers the custom pigmented and stain colors your customers demand.



For more information about repeatable, accurate color, visit our booth or contact your Sherwin-Williams sales representative.

Visit [wood.sherwin-williams.com](http://wood.sherwin-williams.com)



**SHERWIN  
WILLIAMS.**



# We are Delivering the Difference in Indiana

Sierra Forest Products has expanded its reach with a new, state-of-the-art warehouse in Elkhart, IN.

- Exceptional Service
- Expansive Product Catalog
- Next Day Deliveries
- Custom Milling
- Straight Line Ripping



**What you need. When you need it. By people that know and care.**

## Our team is here to support your team!

**Ray Metheny**  
rmetheny@sierrafp.com  
630 877 3978

**Paul Spitz**  
pspitz@sierrafp.com  
630 346 5990

**Kyle Piotrowski**  
kpiotrowski@sierrafp.com  
630 473 5101

**Austin Alexander**  
aalexander@sierrafp.com  
720 813 6778

**Dave Ramundo**  
dramundo@sierrafp.com  
574 544 9419

**Alex Early**  
aearly@sierrafp.com  
773 383 4840



1 800 646 7564 | [www.sierrafp.com](http://www.sierrafp.com)

Booths 441 - 444, 465 - 468

# NEED ROOFING SERVICES? WE'RE ON TOP OF IT.

(literally)

**SHINGLES**



**METAL**



**RESTORATION**



**SIDING**



Gold Sponsor

**WIN A FREE ROOF!** —up to \$10,000 value!  
Enter our drawing at our booth for a chance to win!

**SEE US FOR SHOW SPECIALS  
NOW BOOKING SUMMER 2025**



**Simple  
Roof Solutions**  
Commercial & Residential  
Roofing Company

**FREE ESTIMATES**

Ph: (260) 463.8009  
Fax: (260) 463.8010

**Stiles Machinery, in partnership  
with Edward B. Mueller Company, Inc.,  
providing solutions built around you.**

Gold Sponsor



**Come see the HOMAG N-300 in action!  
Booth# 921-926**

HOMAG  
CENTATEQ  
N-300

**HE | STILES**

**Mueller**  
Edward B. Mueller Company, Inc.

616.698.7500 | [StilesMachinery.com](http://StilesMachinery.com)

Booths 921 - 926

43

# Stoll Brothers

Complete Supplier of Woodworking Tools and Machinery

P.O. Box 367,  
509 S.E. Street, Odon, IN 47562  
**(800) 603-8923**

Call us for pricing or for a free catalog. Table Saws, Planers, Band Saws, Sanders, Jointers, Wood Lathes, Cordless Tools & More...



## Makita

### Model # XT288T

18V LXT® Lithium-Ion Brushless  
Cordless 2-Pc. Combo Kit (5.0Ah)



### Model # XT801X1

18V LXT® Lithium-Ion Cordless  
8-Pc. Combo Kit (3.0Ah)



### Model # G5L04M1

40V max XGT®  
Brushless  
12" Dual-  
Bevel Sliding  
Compound  
Miter Saw Kit,  
(4.0Ah)



## MAKTRAK

THE NEXT GENERATION IN MODULAR STORAGE SYSTEMS™



T-90009

T-90015

T-90021

T-90037

T-90043

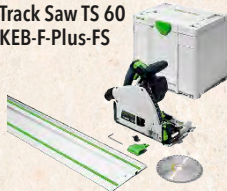
T-90059

T-90065

## FESTOOL

### Model # 577422

Track Saw TS 60  
KEB-F-Plus-FS



### Model # 576423

DOMINO Joiner DOMINO  
DF 500 Q-Set



### Model # 575306

Sliding Compound  
Miter Saw  
KAPEX KS  
120 REB



## POWERMATIC

### Model # PM2800B

Stock #1792800B  
18-Inch Variable  
Speed Drill  
Press, 1 HP, 1Ph  
115/230V



### Model # PM2700

Stock #1280101C  
Shaper,  
5HP  
1PH 230V



### Model # 209HH-1

Stock #1791315  
20-Inch  
Planer, Helical  
Cutterhead,  
5 HP,  
1Ph 230V



## JET

### Model #

**JDP-17**  
Stock #716300  
17-Inch  
Floor Drill  
Press, 16  
Speed, 1Ph  
115V



### Model #

**JCDC-3**  
Stock #717530K  
Cyclone Dust  
Collector,  
2-Micron  
Filter, 1240  
CFM, 3 HP,  
1Ph 230V



### Model #

**OES-80CS**  
Stock #708447  
6" x 8"  
Oscillating  
Edge Sander,  
1-1/2 HP,  
1Ph  
115/230V



# WINNER

## WOODWORKING EQUIPMENT & SUPPLY



**DOUCET**



alphacam



**COIMAGROUP**



**BAKER Products**



**GDP INDUSTRIAL TOOLING**



702 North Shortridge Road Indianapolis, IN 46219 Phone: 800-240-6530

Booths 931 - 942

Gold Sponsor



# Quality Hardwood Lumber and Plywood

No Matter How Big!



Gold Sponsor



## Our Services:

Now offering ripped to width lumber on our BRAND NEW Mereen-Johnson 524

- ✓ Custom Thicknesses, Lengths and Widths
- ✓ Just-In-Time Delivery
- ✓ Kiln Dried Northern Hardwoods
- ✓ Straight Line Ripping One Edge (SLRIE )
- ✓ Surfacing

**Talk to a Hardwood Specialist Today!**

## Contact Us

☎ 269-686-7004

🌐 [wolverinehardwoods.com](http://wolverinehardwoods.com)



**WÜRTH BAER SUPPLY COMPANY**  
**SERVICE • QUALITY • SELECTION**

**We will see you at the**  
**24<sup>th</sup> Annual**  
**MIDWEST TOOL EXPO**  
**January 23, 24**  
**& 25, 2025**



Gold Sponsor

**Visit Us at Booths 345 & 346**

**[www.wurthbaersupply.com](http://www.wurthbaersupply.com) • 800-289-2237**

See us at the  
Midwest Tool Expo  
Booth #454-455

# ADC

Arthur Distributor Co. LLC

See us at the  
Midwest Tool Expo  
Booth #454-455

PREMIER WOODWORKING SUPPLIES

PH: (217) 543-2166 • FX: (217) 543-2167

adcorders@ibyfax.com

*Serving The Best ... For You*

**FREE DELIVERY** to the Nappanee and Northern IN areas on Tuesday and Thursday. Place your orders by 11:00 AM on the day prior to delivery.

General Sales Ext. 2 or 3

Plywood Sales Ext. 5 or 7



Simply better.





DOES YOUR MARKETING

TASTE LIKE CHICKEN?



Silver Sponsor

## DON'T SETTLE FOR CHICKEN-FLAVORED IDEAS

The phrase "It tastes like chicken" is used to describe something so bland and familiar that it blends into the background. Unfortunately, that's where much of today's marketing stands—so-so, mundane, and forgettable.

**Barnyard Marketing can help you get your brand noticed.** Don't settle for chicken-flavored marketing ideas when you can serve up something that sizzles.

GRAPHIC DESIGN • WEBSITES • SOCIAL MEDIA • STRATEGY

**260-268-4210**

100 S Detroit St • LaGrange, IN  
hello@barnyardmarketing.com  
BarnyardMarketing.com

*Barnyard*  
**MARKETING**

**FREE DRAWING: STOP BY OUR BOOTH**



*H-Select*



JEFFREY ALEXANDER®



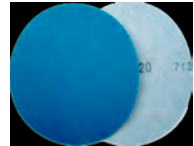
KING SLIDE



KNAPE & VOGT



UNEEDA



Stop by our both to see our cash & carry items!

Levi & Dora Miller 330-897-0017

[buckeyeorders@ibifax.com](mailto:buckeyeorders@ibifax.com) Fax 330-897-0022





 **BOSCH**



See us at the  
Booth #'s  
419 - 420

Enter our  
Drawing for  
a Bosch Drill  
set

13487 CR 22  
Middlebury, IN 46540

**574-825-9024**

Full line of Domestic plywood  
including Gray Elm & Rustics  
Shelving & cut to size plywood  
Custom Routing & Edgebanding

 **columbia**  
FOREST PRODUCTS™

## **Fiberglass Liner Panels**

*Lots of Colors and Sizes*

**Perfect for lining  
your shop, garage,  
kennels, or washbays.**

# D.A. HOCHSTETLER & SONS

FIND US AT  
**BOOTH SPOT #645**



Silver Sponsor



**PSP PILINGS**

**UNIVERSAL  
CAMPFIRE GRILL**

**STACK PRO** 

(260) 593-0445 ext. 2  
[dahoch@emyprinter.net](mailto:dahoch@emyprinter.net)  
[dahochstetler.com](http://dahochstetler.com)

Enter a **\$500 drawing** with each  
qualifying purchase.

# Do people know about **YOUR PRODUCT?**

Become a household name – advertise in the **Empire Express**



Reach 90% of the horse & buggy population.  
**Call us at 231-349-4134, and we'll place your ad** in one, two, or all three advertising regions.



**15,000 homes**



**15,000 homes**

**25,000 additional homes** when you advertise in *Community Connection*.

Our magazines offer something for everyone:

- Full color display ads
- Cost-effective classified ads
- Railroad books and puzzles
- Inspirational stories
- Educational articles
- Travel and vacation guides

**One call • One invoice • Flexible billing cycles & payment options**

For more information, contact us today:

**Michiana Empire Express**

Ph: 231-349-4134 - Fax: 231-867-2111

ads@inspire-press.com - 16693 115th Ave., Rodney, MI 49342

**NEW FEATURE**  
**Special Placement**  
**on our GLOSSY Cover!**  
Reserve your spot for a full 3 months.  
Contact Jason  
for more information.  
**574-221-3212**  
trains@ibyfax.com

# Fasteners are our specialty.

Call us for  
Industrial  
supplies  
and hard to  
find fasteners.

We carry supplies for

- the metalworking industry
- ag repair
- small engine repair
- maintenance
- small manufacturers
- polywood

Call us today  
for a free catalog!

Delivery available to  
Elkhart and LaGrange  
Indiana area.

Straightforward Prices.  
Fast & Friendly.  
Top Quality.

# epco

## Wishing for a supplier where you can buy all your industrial supplies?



We ship UPS  
or USPS Priority Mail



112 Industrial Pkwy E, Middlebury, IN 46540  
(574) 825-9750 • [orders@epco.co](mailto:orders@epco.co) • [www.epco.co](http://www.epco.co)



Mel & Marnita Helmuth

200 E CR 800 N

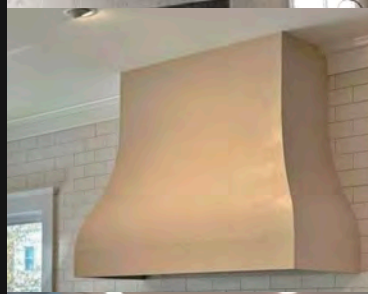
Arthur, IL. 61911

P: 217-512-3675

F: 217-210-4358

[hardwooddesigns@ibyfax.com](mailto:hardwooddesigns@ibyfax.com)

## Custom Range Hoods



**Building Dreams With Passion**  
**~ Wholesale And Retail**  
**~ Shipping is Available**

Silver Sponsor

# Highland AUTOMATION

620 Fairfield Road • Montoursville PA 17754

P: (570)676-6077 F: (570)266-5652

www.highlandautomate.com

**Machinery for Wood, Plastics & Composites Manufacturing**

**REHNEN**  
machinery



**SK-2** \$15,950.00

Belt Oscillates Full Height, Fixed Table  
Sanding From All Sides w/ Different Radii  
Ideal for Furniture Components  
8" Tall Sanding Belt • 44" Platen



**SK-3** \$21,500.00

One Sided Sander with Full Oscillation  
8" Tall Sanding Belt • 78" Platen  
Through the Table Dust Collection



**RS-2010** \$18,579.00

Fully Tiltable  
7.87" Tall Sanding Belt • 41" Platen  
Veneer Sanding Unit  
w/ Power Feeder



*Ecoflex Pictured with Options Added*

#### Rehnen Drying Racks

Model	Max Load	Price
Ecoflex	880 lb	\$975
Varioflex	800 lb	\$1250
Stabiloflex	1985 lb	\$1375

*Additional Supports and Poles Available*

## RILESA



### **Omnia 2200** **4-Sided Component Drilling Machine**

**Height:** 10-40 mm (~0.393 to ~1.5748in)

**Width:** 20-250 mm (~0.787 to ~9.842in)

**Length:** 170-2200 mm (~6.692 to ~86.614in)

**Materials:** Solid Wood, MDF, Chipboard and Plywood

*Optional Hopper with Integrated Down Stacking*

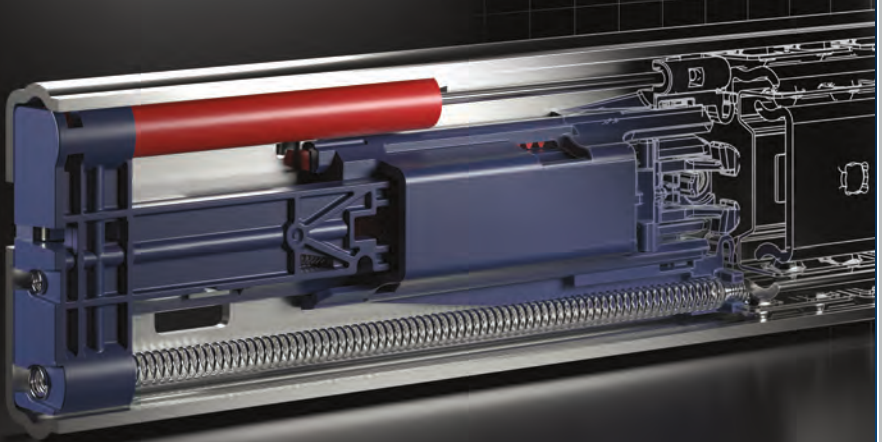
*Optional Horizontal Drilling Unit From Backside with Long*

*Stroke (up to 130 mm)*

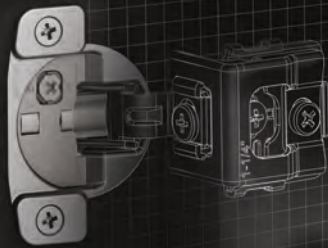




## OPTIMIZING SPACE & MOTION



Silver Sponsor



Visit us at Booth #521

[WWW.KV.COM](http://WWW.KV.COM)

*Do you need components for your new product designs?*

## **We can help!**

MANUFACTURERS OF DOORS, DRAWER BOXES, MOLDINGS, FACE FRAMES, ETC.



Silver Sponsor



*Contact us today:*



p: 330.359.3216

f: 330.359.2992

address: 9035 Senff Rd  
Dundee, OH 44624

e: [ljcompanies@emyprinter.net](mailto:ljcompanies@emyprinter.net)

# Richelieu

## Welcome To the 24th Annual Midwest Tool Expo & Auction

Where Innovation and time  
honored traditions meet

Thank you for your continued  
support!

Building  
Partnerships  
In the  
Community



DECORATIVE HARDWARE



DYNAMIC SPACE SOLUTIONS AND BRILLIANTÉ PANELS



BARN-STYLE  
SLIDING DOORS  
& ANTIK PANELS



EDGEBANDING & VENEERS



TOOLS AND FASTENERS



LOGO II CLOSET SYSTEM

For your Woodworking and  
Hardware needs contact your  
Salesman



Central Illinois  
Northern Indiana  
Northern Indiana

Stephanie Klintworth (217) 318-1788  
Jon McGraw (317) 225-1482  
Mike Bartkowiak (260) 224-4546

Booths 543 - 544

Silver Sponsor

# Luxury... ...at your door!

Your local source for  
exotic and domestic  
veneered custom plywood

The Craftsman's Source for  
Hard-to-Source Veneered Products

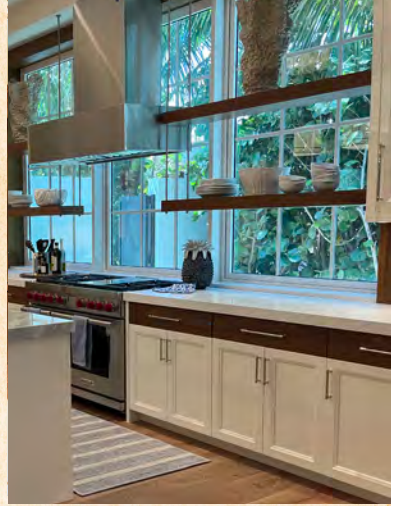
Oversized and Custom Sized  
Plywood and Sheet Goods

Custom Veneered or Inlay Table Tops

Call us today and ask how we can  
enhance your next project!

## ***Shur Ply***

Phone: 260-499-4847  
[ShurPly.com](http://ShurPly.com) | [sheldon@shurply.com](mailto:sheldon@shurply.com)  
200 Industrial Pkwy | LaGrange, IN

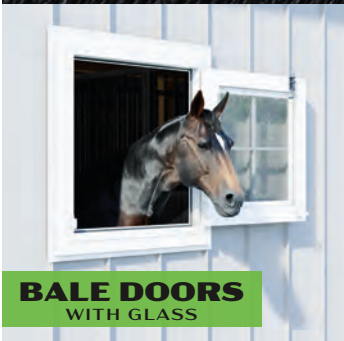


# SILVERCRAFT

YOUR DOOR TO HIGHER STANDARDS

Call us at  
**(574) 825-8757**  
to find a dealer  
near you!

Find us at: 11903 CR 30  
Goshen, IN 46528



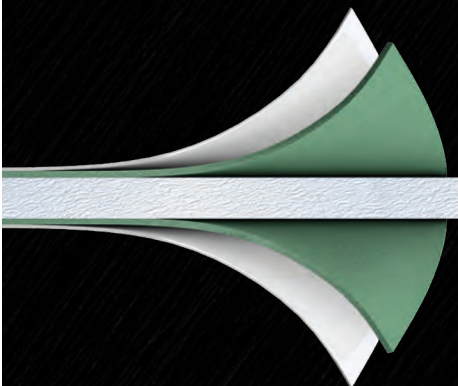
**BALE DOORS**  
WITH GLASS



**CARRIAGE**  
SPLIT SLIDING DOORS

*Aluminum Doors – Dutch, Sliding, & Bale Doors*

## CUSTOM LAY-UP PANELS



Many substrate choices:

- PET & EPS foam board
- Fiberglass
- Azdel
- and more...
- Luan
- Plascore

For more information,  
contact Trevor:

**(574) 825-8757**  
[trevor@silvercraftllc.com](mailto:trevor@silvercraftllc.com)



# SUPERIOR EDGE

Manufacturer of High-Quality Carbide Cutting Tools

## NOW OFFERING DRILL BIT SETS



- Heavy Duty
- Premium High-Speed Steel
- Black and Gold Finish for increased lubricity.
- 3- Flat Shank Design
- Multiple Set Configurations to choose from.

### SERVICES

- Specialty Tool Design
- New Tool Manufacturing
- Re-Sharps
- Edge Prep
- Coatings
- New Tooling Sales

*Cutting Tools for Metal,  
Wood, and Composite  
Industries*

**574-773-0331**

Choose From Over 600 Designs | Now Shipping Internationally!



**SUPERIOR  
EDGE**

25198 County Rd 54, Nappanee, IN 46550  
574-773-0331 | SuperiorEdge@ibyfax.com

<b>A&amp;M Kiln Dry (Booth 335-336)</b> ..... 22 210 Wastewater Drive, Millersburg, IN 46543 574-780-2837	<b>AW Machinery (Booth 817-824, 948-951)</b> ..... 25 6161 Mt Hope Rd, Apple Creek, OH 44606 330-778-0020
<b>ABC Saw &amp; Tool Inc. (Booth 403-404)</b> ..... 78 2436 Eddy St, Elkhart, IN 46516 574-970-0397	<b>B&amp;B Machinery (Booth 901-910)</b> ..... 26 821 E Windsor Ave, Elkhart, IN 46514 616-570-5959
<b>Accessa (Booth 253-254, 301-302)</b> ..... 23 310 N. Alabama St., Indianapolis, IN 46204 800-593-0126	<b>B.A.R.T. Supply (Booth 349-350)</b> 1702 Terminal Rd, Niles, MI 49120 269-683-4583
<b>Accunique Door (Booth 616)</b> 1685 N 1100 W, Shipshewana, IN 46565 574-825-0758	<b>Bad Dog Tools (Booth 533-534)</b> ..... 79 24 Broad Common Rd, Bristol, RI 2809 800-252-1330
<b>Advanced Dimensions (Dirig Design) (Booth 540-541)</b> 2259 St Hwy 7, Unadilla, NY 13849 607-437-0165	<b>Barnyard Marketing (Booth 130-131)</b> ..... 49 100 S. Detroit St, LaGrange, IN 46761 260-268-4210
<b>Aetna Building Solutions (Booth 486)</b> 1401 St Charles Rd, Maywood, IL 60153 708-655-9741	<b>Bawling Acres Woodworking LLC (Booth 953) 93</b> 0155 S 1000 W, Middlebury, IN 46540 260-535-0960
<b>Agape Mission of LaGrange IN (Booth 1047)</b> 2895E 150N, LaGrange, IN 46761 260-350-1846	<b>Beechy Buggy Shop (Booth 612)</b> 1475S 250W, LaGrange, IN 46761 260-499-3277 x4
<b>Alco Overhead Doors II LLC (Booth 639-640)</b> 9321N 850E, Syracuse, IN 46567 574-238-8448	<b>Beechy's Molding Plus (Booth 239-240)</b> 1365 N 500 W, Shipshewana, IN 46565 260-768-7030
<b>Alpha Building Center (Booth 241-252, 303-314)</b> ..... 19 0855 N SR 5, Shipshewana, IN 46565 260-768-4410	<b>Bentwood Solutions (Booth 340)</b> 7426 CR 77, Millersburg, OH 44654 330-674-1454
<b>Anabaptist Brotherhood (Booth 107)</b> ..... 78 27770 County Road 48, Nappanee, IN 46550 574-536-4214	<b>Black Anvil Creative (Booth 108-109)</b> 107 Crystal Heights Blvd, Middlebury, IN 46540 574-500-1111
<b>Anabaptist Financial (Booth 114-115)</b> ..... 4 55 Whisper Creek Dr, Lewisburg, PA 17837 800-653-9817	<b>Blue Ridge Polymers (Booth 315-316)</b> 4625N 850W, Shipshewana, IN 46565 260-768-4760 x2
<b>Anabaptist Forum Publishing (Booth 110)</b> 28599 St Rt A, Rutledge, MO 63563 660-341-2160	<b>Blum Inc (Booth 515)</b> ..... 94 7733 Old Plank Rd, Stanley, NC 28164 704-827-1345
<b>Arrow Industrial Sales (Booth 632-634, 635A)</b> . 24 230 N Wabash St, Millersburg, IN 46543 574-349-6575	<b>Bontrager's Water One (Booth 525)</b> 57275 CR 29, Goshen, IN 46528 574-825-9211
<b>Arthur Distributor Company (Booth 601-602, 553-554)</b> ..... 48 283 E SR 133, Arthur, IL 61911 217-543-2166	<b>Boon Books (Booth 111-112)</b> ..... 80 1635S 1000W, Shipshewana, IN 46565 574-821-2000
<b>Artistic Stone Masonry (Booth 226)</b> 5958 4th Rd, Bremen, IN 46506 574-248-0539	<b>Boss Hammer Company &amp; Weaver Tool Gear (Booth 126-127)</b> 5015 Mertz Rd, Mayville, MI 48744 989-928-1169

*Highlighted booth numbers represent vendor space in the hallway.*

<b>Buckeye Hardware (Booth 435-437, 472-474) .. 50</b> 1465 TR 178, Baltic, OH 43804 330-897-0017	<b>County Line Concepts (Booth 482-483) ..... 82</b> 11921 N Winans Rd, Alma, MI 48801 989-763-2327
<b>Busy Beaver Publications (Booth 323-324) ..... 95</b> PO BOX 52, Charm, OH 44617 330-893-1214	<b>County Line Laminating (Booth 479-480)</b> 62201 E Co Line Rd, Goshen, IN 46528 574-238-3426
<b>Centurion Exteriors (Booth 416)</b> 1943 Lakeview Dr, Ft. Wayne, IN 46808 419-630-4501	<b>Creative PowerCell-utions (Booth 413-415)</b> 105 S Main St, Topeka, IN 46571 260-350-4720
<b>Choice Cabinets (Booth 120-121) ..... 93</b> 61095 E Co. Line Rd, Shipshewana, IN 46565 574-825-0073	<b>Creekside Poly Fencing (Booth 118-119)</b> 1275S 1100W, Middlebury, IN 46540 574-327-3536
<b>Chupps Herbs &amp; Fabrics (Booth 223-224)</b> 27539 Londick Rd, Burr Oak, MI 49030 269-489-8905	<b>Crossroads United Way (Booth 1022)</b> 601 CR 17, Elkhart, IN 46516 574-295-1650
<b>Circle T Manufacturing (Booth 927-930)..... 27</b> 1801 A CR 1300 E, Sullivan, IL 61951 217-728-4834	<b>Cutco (Booth 487)</b> 322 Houghton Ave, Olean, NY 14760 716-790-7181
<b>Clearview Roofing (Booth 620) ..... 80</b> 1485S 300W, LaGrange, IN 46761 260-463-2588	<b>D&amp;M Plywood (Booth 419-420)..... 51</b> 13487 CR 22, Middlebury, IN 46540 574-825-9024
<b>Cole Hardwood (Booth 339)</b> 1611 W. Market St, Logansport, IN 46947 574-753-3151	<b>D.A. Hochstetler &amp; Sons (Booth 645-648) ..... 52</b> 4165 S 500 W, Topeka, IN 46571 260-593-0445 x2
<b>Community Connection (Booth 1017)</b> PO BOX 70, Kinzers, PA 17535 717-545-7008	<b>Dalam Welding (Booth 603-605)</b> 7655 S 200 W, Topeka, IN 46571 260-593-0168
<b>Compass Foundations (Booth 526) ..... 96</b> 4436 Iron Bridge Rd, Waynesboro, PA 17268 856-974-5335	<b>Dave Kauffman with Empowering Small Business (Booth 151) ..... 5</b> 5077 Fruitville Road, Sarasota, FL 34232 813-580-8920
<b>Complete Designs (Booth 528-529, 626-627)... 81</b> 1720 N 1150 W, Middlebury, IN 46540 574-206-6937	<b>David E. Easterday &amp; Co/Woodwright (Booth 333-334, 421-422)..... 29</b> 1225-C US Route 62, Wilmot, OH 44689 330-359-0700
<b>Cornerstone Business Printing, LLC (Booth 152-154, 201-203) ..... 28</b> 801 Wayne Street, Middlebury, IN 46540 574-538-7879	<b>Die Botschaft (Booth 1031)</b> 3225 Cabin Dr, Millersburg, PA 17061 717-362-2033
<b>Costa Sanders (Booth 952)</b> 107 Seminole Dr, Archdale, NC 27263 336-847-1181	<b>Diehl Machines (Booth 809-812) ..... 97</b> 981 South Wabash, Wabash, IN 46992 260-563-2102
<b>Countertops Plus Inc (Booth 417-418)</b> 2230N 500W, Shipshewana, IN 46565 260-768-7637	<b>Dimensions In Tooling (Booth 348)</b> 12635 Sandy Dr, Granger, IN 46530 574-968-0030
<b>Country Wood Products (Booth 230)</b> 3175 W 050 N, LaGrange, IN 46761 260-463-4224	<b>Dynabrade Power Tools and Abrasives (Booth 449)</b> 8989 Sheridan Dr, Clarence, NY 17031 800-828-7333
	<b>Empire Express (Booth 496-498, 511-513) ..... 53</b> 530 Mill Creek Rd, Utica, PA 16362 724-903-8140



<b>emy People LLC (Booth 484-485)..... 98</b> 509 Frystown Rd, Myerstown, PA 17067 717-277-0200	<b>Hardwood Designs (Booth 488) ..... 55</b> 200 E CR 800 N, Arthur, IL 61911 217-294-7565
<b>EPCO Sales Inc (Booth 489-490, 519-520)..... 54</b> 112 Industrial Pkwy, Middlebury, IN 46540 574-825-9750	<b>Hardwoods Specialty Products (Booth 611) .... 82</b> 5430 Beck Dr, Elkhart, IN 46516 574-295-7600
<b>Excel Coatings LLC (Booth 531-532)</b> 2555 S 200 W, LaGrange, IN 46761 260-499-3113 x0	<b>Helmuth Quality Power (Booth 649-654) ..... 99</b> 11665 W 500 S, Millersburg, IN 46543 574-642-3174 x701
<b>Fade Business Solutions (Booth 347)</b> 59391 Glory Lane, Middlebury, IN 46540 574-596-8604	<b>Hentzen Coatings (Booth 342) ..... 101</b> 6937 W. Mill Rd, Milwaukee, WI 53218 414-353-4200
<b>Fantastech Energy Solutions (Booth 606-607) 96</b> 3635S 1200W, Goshen, IN 46528 574-218-1973	<b>Heritage Acres Paints &amp; Supplies (Booth 233-234, 321-322) ..... 31</b> 10120W 500S, Millersburg, IN 46543 260-593-0145
<b>FinishWorks (Booth 140-143, 212-215)..... 20</b> 3194 Hickory Blvd, Hudson, NC 28638 800-545-0047	<b>Highland Automation (Booth 801-804) ..... 56</b> 620 Fairfield Rd, Montoursville, PA 17754 570-676-6077
<b>Fire-Pro (Booth 1008)</b> 4053 Willshire Eastern Rd, Willshire, OH 45898 419-513-2123	<b>Hillside Electronics &amp; Magaura (Booth 1036) ..... 102</b> 129 Bethany Rd, Ephrata, PA 17522 717-733-0133
<b>Fraud Aware (Booth 231-232) ..... 7</b> PO Box 34, Ephrata, PA 17522 717-740-2790	<b>His Glory Ministries (Booth 113)</b> 1500 Highbrook Drive, Columbus, OH 43204
<b>Gallcreo (Booth 1021)</b> 10190 E 800 N, Orland, IN 46776 260-499-1342	<b>Hitz Halter (Booth 539)</b> 1020 Old State Rd, Mattoon, IL 61938 217-238-3030
<b>Gehman Business Advisors (Booth 537-538) .... 8</b> 180 Diller Ave, New Holland, PA 17557 717-354-8288	<b>Hochstetler Woodworking LLC (Booth 614-615) ..... 103</b> 6425 W 300 S, Topeka, IN 46571 260-593-3255
<b>GIS Inc. (Booth 552)</b> 3111 Cannongate Dr, Fort Wayne, IN 46808 260-343-1211	<b>Holmes Printing Solutions (Booth 139)..... 83</b> 8757 CR 77, Fredericksburg, OH 44627 330-575-2335
<b>Green Fast Cure (Booth 507)..... 100</b> 5461E 300N, Montgomery, IN 47558 812-309-8757	<b>Home Matrix (Booth 445-448, 461-464, 508-510)..... 32</b> 1319W North St, Bremen, IN 46506 574-301-7121
<b>Gren Heat (Booth 636)</b> 3600N SR 5, Shipshewana, IN 46565 260-768-7519	<b>Hoosier Pedestal DBA Midwest Turnings (Booth 494-495) ..... 101</b> 7900 W 650 S, Topeka, IN 46571 260-593-0631
<b>Hafele America Co. (Booth 411-412) ..... 30</b> 3901 Cheyenne Dr, Archdale, NC 27263 800-423-3531 x5124	<b>Hydro Heat Inc / Otto Stove &amp; Fireplace (Booth 545-548) ..... 84</b> 10620 W 050 N, Middlebury, IN 46540 260-768-4809
<b>Hardware Resources (Booth 617)</b> 4310 Marlana St, Bossier City, LA 71111 318-393-4788	<b>Ideal Coatings (Booth 341)</b> 11431 CR 10, Middlebury, IN 46540 574-358-0182

*Highlighted booth numbers represent vendor space in the hallway.*

<b>IdentiGrow by Blue Ridge Impressions Inc (Booth 138)</b> ..... 83	<b>L&amp;J Companies (Booth 328-329)</b> ..... 58
10603 Port Republic Rd, Port Republic, VA 24471	9035 Senff Rd, Dundee, OH 44624
540-283-9193	330-359-3216
<b>Indian Trail Tax Prep (Booth 317-318)</b> ..... 104	<b>LaGwana (Booth 217-220)</b> ..... 35
1545W 450N, Howe, IN 46746	2465 N 850 W, Shipshewana, IN 46565
260-562-2241 x2	260-768-7878 x1034
<b>Indiana Department Of Environmental Management (Booth 204)</b>	<b>Lancaster County Showcase (Booth 221)</b> ..... 36
300 North Dr. Martin Luther King Jr. Blvd.,	836 Houston Run Dr, Gap, PA 17527
South Bend, IN 46601	717-687-8150
574-261-4977	<b>Leaf Filter Gutter Protection (Booth 225)</b>
<b>Integrity Overhead Door (Booth 122)</b>	1595 Georgetown Rd, Hudson, OH 44326
2195 W 050 N, Lagrange, IN 46761	216-906-2423
269-977-8526	<b>Live Edge Venture (Booth 430)</b>
<b>Interstate Fleets (Booth 216)</b> ..... 104	69793 US 33, Millersburg, IN 46543
696 Bethlehem Pike, Colmar, PA 17552	574-642-3522
717-366-2515	<b>LMC Bed Hardware (Booth 222)</b>
<b>Iron Bull MFG LLC (Booth 813-816)</b> ..... 85	5015 W US 20, LaGrange, IN 46761
5971N 350E, Marshall, IN 47859	260-499-4547
765-597-2480	<b>Logivision Technologies (Booth 1013)</b>
<b>JAM Industrial Supply (Booth 1016)</b>	2450 US-62, Winesburg, OH 44690
1220 Market Ave S, Canton, OH 44707	330-234-5025
330-456-3000	<b>M.W. Repair &amp; Sales LLC (Booth 618-619)</b>
<b>JDL Co. (Booth 608)</b>	11325 W 400 S, Millersburg, IN 46543
9105 Medill Ave, Franklin Park, IL 60131	574-642-3556
847-877-2027	<b>Machine Solutions (Booth 805-808)</b> ..... 106
<b>JKL Machinery (Booth 825-830, 945-947)</b> ..... 33	1110 Vine St, Jasper, IN 47546
7795 Lochlin Dr, Brighton, MI 48116	812-559-0606
248-437-4738	<b>Magma Heat (Booth 943-944)</b> ..... 99
<b>Job Tamer (Booth 401-402, 353-354)</b> ..... 34	11120 W 300 S, Shipshewana, IN 46565
1085N 850W, Shipshewana, IN 46565	260-535-5001
260-768-7336	<b>Martin Energy Group (Booth 431)</b> ..... 107
<b>Jr's Metal, LLC (Booth 237)</b>	70150 Hwy 50, Tipton, MO 65081
6728W 1150N, Nappanee, IN 46550	717-738-0300
574-354-1913	<b>METALpro (Booth 1035)</b> ..... 108
<b>KC Innovations LLC (Booth 146-150, 205-209)</b> 21	4715 136th Ave, Hamilton, MI 49419
PO Box 806, Middlebury, IN 46540	262-679-0504
888-290-8920	<b>MC Supply &amp; Service (Booth 1030)</b>
<b>Knape &amp; Vogt (Booth 521)</b> ..... 57	3907 Murvhill Rd, Valparaiso, IN 46383
2700 Oak Industrial Dr NE,	219-548-5711
Grand Rapids, MI 49505	<b>Michiana Builders LLC (Booth 625)</b>
616-258-5383	0950 W US 20, LaGrange, IN 46761
<b>Koble Systems (Booth 115A)</b>	260-463-8111
350 New Holland Ave, Lancaster, PA 17602	<b>Michiana Farm Supply (Booth 1032)</b> ..... 109
717-292-8431	0105 E 200 N, Lagrange, IN 46761
<b>Kuhns Power Equipment LLC (Booth 438-439, 470-471)</b> ..... 105	260-463-8113
10101 Shively Rd, Nappanee, IN 46550	<b>Michiana Flip Phones (Booth 124-125)</b> .....110
574-862-4592	25740 CR 138, Goshen, IN 46526
	574-326-7331

<b>Microvellum (Booth 132)</b> ..... 85 444 S. Haskell St, Central Point, OR 97502 541-254-8233	<b>Pinecrest Protections Inc. (Booth 1001)</b> 7240 S 080 E, Wolcottville, IN 46795 574-596-1656
<b>Midwest Hardware Solutions (Booth 1034)</b> 103267 County Rd N, Colby, WI 54421 715-937-0850	<b>Plain Communities Business Exchange (Booth 343-344)</b> ..... 38 PO Box 520, Millersburg, PA 17061 717-362-1118
<b>Midwest Machinery Sales &amp; Service (Booth 911-916)</b> ..... 109 3404 Busch Drive, Grandville, MI 49418 616-826-0641	<b>Plain Direct LLC (Booth 514)</b> .....114 PO Box 446, Blue Ball, PA 17506 907-299-7252
<b>Midwest Utility Source (Booth 629-631)</b> ..... 104 14544 CR 12, Middlebury, IN 46540 574-822-7535 574-849-6955	<b>Plain Press (Booth 103)</b> ..... 87 100 Deiblers Gap Rd, Millersburg, PA 17061 717-439-7206
<b>Miller Lumber (Booth 452-454, 455-457, 501-503)</b> ..... 37 3070W 100N, LaGrange, IN 46761 260-463-3461	<b>Precision Installation LLC (Booth 330-332)</b> ....115 3460 W 700 S, Topeka, IN 46571 260-214-0078
<b>Miller Machine Shop LLC (Booth 432)</b> .....111 10780 W 1100 N, Nappanee, IN 46550 574-696-2900	<b>ProTech Water LLC (Booth 133-134)</b> ..... 39 110 S Babcock St, Topeka, IN 46571 574-370-8708
<b>Miller Power LLC (Booth 609-610)</b> ..... 86 6735W 100S, Topeka, IN 46571 260-768-7002	<b>Quality Commercial Roofing (Booth 1023)</b> 3435 E 100 N, Lagrange, IN 46761 260-336-8512
<b>Miller's Sewing Machine Sales &amp; Service (Booth 1024-1025)</b> .....112 0485 W 200 S, Lagrange, IN 46761 260-499-3136	<b>Quality Custom Metalworks (Booth 491-493)</b> .116 3589 SR 643, Baltic, OH 43804 330-473-1478
<b>MillerTech (Booth 516-518)</b> 14632 Old State Road, Middlefield, OH 44062 440-635-6505	<b>Quality Plastics LLC (Booth 104)</b> ..... 88 9602 S Applecreek Rd, Fredericksburg, OH 44627 330-695-5906
<b>Newbury Carriage (Booth 831-834)</b> ..... 86 7040 W 200 S, Topeka, IN 46571 260-768-8055	<b>Raber Patio Enclosures (Booth 623-624)</b> PO Box 365, Shipshewana, IN 46565 260-768-7100
<b>Nighthawk 3D (Booth 116-117)</b> ..... 87 1735 N 500 W, Shipshewana, IN 46565 260-383-2008	<b>Ray-Mer Tool Depo LLC (Booth 1026)</b> 8969 20B Rd, Argos, IN 46501 574-332-3340
<b>Oak Grove Tax Service (Booth 522)</b> 4430 W SR 120, Shipshewana, IN 46565 260-585-0081	<b>Renewal By Andersen (Booth 524)</b> 3633 Miller Dr, Plymouth, IN 46536 317-552-0125
<b>Open Hands (Booth 102)</b> .....113 PO Box 180, West Milton, PA 17886 570-800-2123	<b>Repolite Paints (Booth 613)</b> 412 W Lincoln Ave, Goshen, IN 46526 574-533-5995
<b>Photon Electric LLC (Booth 628, 627A-627B)</b> 11585 W 700 S, Millersburg, IN 46543 574-642-3731	<b>Richelieu Hardware (Booth 543-544)</b> ..... 59 5373 W 79th St, Indianapolis, IN 46268 317-319-8314
<b>Pine Creek Live Edge (Booth 123)</b> 1459 3rd Rd, Bremen, IN 46506 574-546-0652	<b>RT Machine Company (Booth 954-955)</b> 201 Boak Ave, Hughesville, PA 17737 570-584-2002
	<b>Salice America Inc. (Booth 440)</b> .....117 2123 Crown Centre Dr, Charlotte, NC 28227 704-841-7810

*Highlighted booth numbers represent vendor space in the hallway.*

<b>SALT Microfinance Solutions</b> <b>(Booth 113A-113B)</b> .....118 PO BOX 360, Berlin, OH 44610 330-231-5033	<b>Starlight Unlimited LLC (Booth 535-536)</b> ..... 90 95 Willett St., Fort Plain, NY 13339 518-332-8151
<b>Sandman Products (Booth 958-959)</b> ..... 88 PO Box 205, Osceola, IN 46561 574-264-7700	<b>Stiles Machinery (Booth 921-926)</b> ..... 43 3965 44th St SE, Grand Rapids, MI 49512 616-698-7500
<b>Saw &amp; Specialty Corp. (Booth 469)</b> .....117 10555 Shook Rd, Romulus, MI 48174 734-941-2824	<b>Stoll Brothers (Booth 643-644, 645A-645B)</b> ..... 44 509 South East St, Odon, IN 47562 812-636-4053
<b>Sawmill Automations (Booth 1028)</b> ..... 123 4580 S 400 E, Wolcottville, IN 46795 260-336-9127	<b>Stoll Steel Buildings LLC (Booth 635)</b> ..... 76 615 W Elnora St, Odon, IN 47562 812-295-8464
<b>Scarlett Machinery &amp; Tooling (Booth 956-957)</b> 4355 Airwest Dr SE, Grand Rapids, MI 49512 616-871-9889	<b>Straightline Enterprises (Booth 481)</b> ..... 91 11985 W 400 S, Millersburg, IN 46543 574-596-1126
<b>Shady Creek Hardware</b> <b>(Booth 450-451, 458-460, 504-506)</b> 401 N Main St, Wolcottville, IN 46795 260-350-3460	<b>Sun Lite Enterprise LLC (Booth 423-424)</b> .....119 PO Box 441, Gratz, PA 17030 717-862-5959
<b>Sherwin Williams (Booth 235-236, 319-320)</b> ..... 40 4751 Green Ct, Elkhart, IN 46516 574-296-5252	<b>Sunrise Enterprise (Booth 527)</b> ..... 91 4165 Moore Rd, Cass City, MI 48726 989-550-1999
<b>Shur Ply (Booth 128-129)</b> ..... 60 200 Industrial Pkwy, LaGrange, IN 46761 260-499-4847	<b>Sunrise Metal Shop (Booth 549-551)</b> ..... 120 3070W 350S, Topeka, IN 46571 260-463-4026
<b>Sierra Forest Products</b> <b>(Booth 441-444, 465-468)</b> ..... 41 1801 West Hawthorne Ln, West Chicago, IL 60185 630-231-0450	<b>Sunrise Plastics (Booth 1005-1007)</b> 2875 S 375 W, Lagrange, IN 46761 260-768-8162
<b>Silvercraft (Booth 228-229, 326-327)</b> ..... 61 11903 CR 30, Goshen, IN 46528 574-825-8757	<b>Superior Deck Solutions (Booth 523)</b> .....112 4105W SR 120, Shipshewana, IN 46565 260-562-2800
<b>Simple Roof Solutions (Booth 409-410)</b> ..... 42 0920 S 375 W, LaGrange, IN 46761 260-463-8009	<b>Superior Edge (Booth 227)</b> ..... 62 25198 CR 54, Nappanee, IN 46550 574-773-0331
<b>Solect Energy LLC (Booth 478)</b> 340 E 200 S, LaGrange, IN 46761 260-499-3051	<b>SurfPrep (Booth 530)</b> 571 Birch St, Lake Elsinore, CA 92530 951-245-4200
<b>Sonshine Baskets (Booth 425-427)</b> ..... 89 11020 W 400 S, Millersburg, IN 46543 574-642-0599	<b>Sycamore Systems Inc (Booth 107A)</b> ..... 9 5820 N 1120 W, Middlebury, IN 46540 574-400-5844
<b>Spruce Lawn Industries (Booth 428-429)</b> ..... 89 5770 S 675 W, Topeka, IN 46571 574-642-2682	<b>Symbiz Network (Booth 325)</b> 2855 St Rt 503, Arcanum, OH 45304 800-394-7970
<b>Star Home Center (Booth 405-408)</b> ..... 90 12737 CR 30, Middlebury, IN 46540 260-336-9228	<b>The Budget (Booth 105-106)</b> PO Box 249, Sugarcreek, OH 44681 330-852-4634

<b>The Piston Doctor (Booth 1027)</b> 6316 W 825 N, Ligonier, IN 46767 260-241-6113	<b>Weaver Metalworking Machinery LLC (Booth 917-920) ..... 121</b> 800 W Lexington Rd, Lititz, PA 17543 717-625-0302
<b>The Window Doctor (Booth 238)</b> 655 W State Rd 120, Fremont, IN 46737 260-833-6111 260-667-1737	<b>Wellspring Solar (Booth 337-338) .....117</b> 1085N 850W, Shipshewana, IN 46565 260-768-7336
<b>Timber Products (Booth 1029)</b> East State Highway 28, Munising, MI 49862 906-202-0103	<b>Whitetail Life (Booth 1033) ..... 122</b> PO BOX 52, Charm, OH 44659 330-893-1214
<b>Trade Express (Booth 433-434, 475-476)..... 77</b> 3240 E CR 1550 N, Humboldt, IL 61931 217-856-2326	<b>Wible Lumber (Booth 641-642)</b> PO BOX 7, South Milford, IN 46786 260-336-7910
<b>Triad Technologies (Booth 1015)</b> 1402 E Monroe St, Goshen, IN 4652 574-862-7205	<b>Wingards Custom Plastics LLC (Booth 1002)</b> 5705 W 600 N, Shipshewana, IN 46565 260-350-5615
<b>Tri-State Compressed Air Systems (Booth 351-352)</b> 1608 Eisenhower Dr South, Goshen, IN 46526 574-575-0342	<b>Winner Woodworking (Booth 931-942)..... 45</b> 702 North Shortridge Rd, Indianapolis, IN 46219 800-240-6530
<b>Tru-Kote Roofing Systems (Booth 621-622) .... 79</b> 58867 CR 105, Elkhart, IN 46517 574-536-4326	<b>Wolverine Hardwoods (Booth 135-137)..... 46</b> 2810 113th Ave, Allegan, MI 49010 269-686-7004
<b>UNEEDA (Booth 477)..... 123</b> 640 Chestnut Ridge Rd, Spring Valley, NY 10977 630-392-4015	<b>WSI Machinery Inc (Booth 101)</b> 1530 N Old Rand Road, Wauconda, IL 60084 847-526-1411
<b>Wana Acres Fencing (Booth 637-638)</b> 5130W 200N, Shipshewana, IN 46565 260-350-2842	<b>Würth Baer Supply Company (Booth 345-346) 47</b> 909 Forest Edge Dr, Vernon Hills, IL 60031 800-944-2237
<b>Water Works Services (Booth 542)</b> 7155 W SR 120, Shipshewana, IN 46565 260-585-7454	<b>Zimmerman Design (Booth 1048) ..... 92</b> 5831 KY 910, Windsor, KY 42565 606-448-9948
<b>Wayne-Vaughn Equip. Co. Inc (Booth 1018-1020)</b> 716 E Wayne St, Fort Wayne, IN 46802 260-424-4044	

## **BENEFITS OF PREVENTATIVE MAINTENANCE**

- **Improve equipment and system reliability**
- **Reduction of unexpected breakdown**
- **Decrease in expensive parts replacement**
- **Extended equipment life**
- **Improved resale value**
- **Better parts inventory management**

*Highlighted booth numbers represent vendor space in the hallway.*

# MIDWEST



# Tool Expo

## & Auction

932	934	936	938	940	942
931	933	935	937	939	941

912	914	916	918	920	922
924	926	928	930	932	934
923	925	927	929	931	933

902	904	906	908	910
901	903	905	907	909

943	944	945	946	947	948	949	950	951
833	831	829	827	825	823	821	819	817
834	832	830	828	826	824	822	820	818

952	953	954	955	956	957	958	959
815	813	811	809	807	805	803	801
816	814	812	810	808	806	804	802

654	653	652	651	650	649	648	647	646	645	645A	645B
-----	-----	-----	-----	-----	-----	-----	-----	-----	-----	------	------

Aisle 6

601	602	603	604	605	606	607	608	609	610
554	553	552	551	550	549	548	547	546	545

Aisle 5

501	502	503	504	505	506	507	508	509	510
455	456	457	458	459	460	461	462	463	464
454	453	452	451	450	449	448	447	446	445

Aisle 4

Aisle 4

COFFEE

Aisle 4

401	402	403	404	405	406	407	408	409	410
354	353	352	351	350	349	348	347	346	345

Aisle 3

301	302	303	304	305	306	307	308	309	310
254	253	252	251	250	249	248	247	246	245

Aisle 2

201	202	203	204	205	206	207	208	209
154	153	152	151	150	149	148	147	146

Aisle 1

101	102	103
-----	-----	-----

104
-----

105	106
-----	-----

107	107A	108	109
-----	------	-----	-----

ENTRANCE

ENTRANCE RESTROOMS

# BOOTH MAP

644	643	642	641	640	639	638	637	636	635	635A	634	633	632	631	630	629	628	627A	627B
-----	-----	-----	-----	-----	-----	-----	-----	-----	-----	------	-----	-----	-----	-----	-----	-----	-----	------	------

611	612	613	614	615	616	617	618	619	620
544	543	542	541	540	539	538	537	536	535

621	622	623	624	625	626	627
534	533	532	531	530	529	528

511	512	513	514	515	516	517	518	519	520
498	497	496	495	494	493	492	491	490	489

521	522	523	524	525	526	527
488	487	486	485	484	483	482

465	466	467	468	469	470	471	472	473	474
444	443	442	441	440	439	438	437	436	435

475	476	477	478	479	480	481
434	433	432	431	430	429	428

411	412	413	414	415	416	417	418	419	420
344	343	342	341	340	339	338	337	336	335

421	422	423	424	425	426	427
334	333	332	331	330	329	328

311	312	313	314	315	316	317	318	319	320
244	243	242	241	240	239	238	237	236	235

321	322	323	324	325	326	327
234	233	232	231	230	229	228

212	213	214	215	216	217	218	219	220
143	142	141	140	139	138	137	136	135

221	222	223	224	225	226	227
134	133	132	131	130	129	128

127
126
125
124
123
122
121
120
119
118
117
116

RESTROOMS

110

111 112

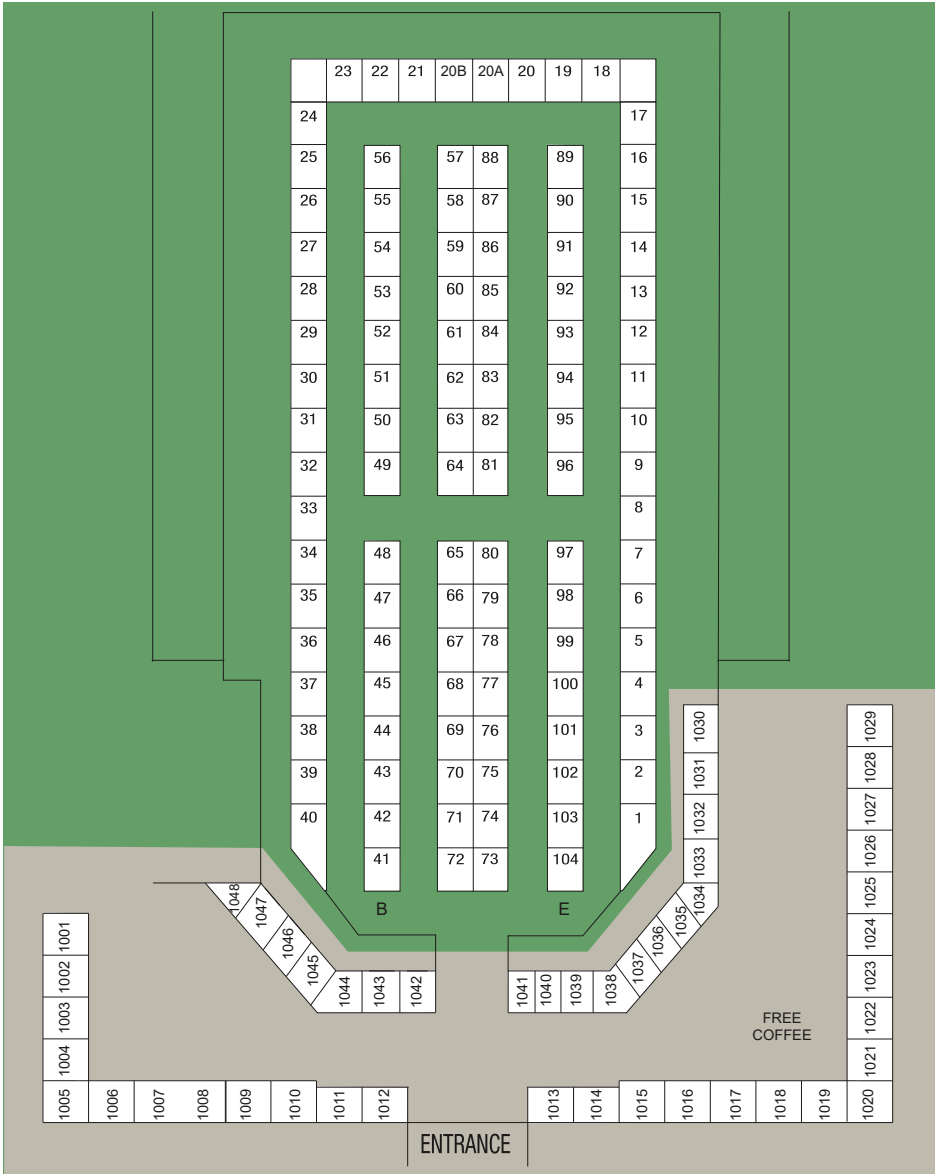
113

113A 113B 114 115 115A 115B

MIDWEST  
*Health & Wellness*  
**EXPO**



# BOOTH MAP





- 4Life (Booth 38)**  
2467 US 62, Dundee, OH 44624  
330-231-7021
- Advanced Biostructural Correction (Booth 24)**  
13188 N 600 W, Nappanee, IN 46550  
574-773-2742
- AIMing for Higher Summits (Booth 59)**  
0345 N 400 E, Lagrange, IN 46761  
2604994980
- Amaze LLC (Booth 27)**  
16719 DOTY RD, New Haven, IN 46774  
260-442-7320
- Anovite (Booth 94-95)**  
5150 W SR 120, Shipshewana, IN 46565  
2603500569
- Arbonne (Booth 7)**  
6560W 100N, LaGrange, IN 46761  
260-768-4764
- Asea (Booth 96) ..... 127**  
26659 CR 54, Nappanee, IN 46550  
574-773-9404
- Awareness Team (Booth 1045)**  
6143W 1300N, Nappanee, IN 46550  
574-773-5405
- Barefoot Shoes (Booth 25-26)**  
3503 Pleasant Valley Rd SW, Baltic, OH 43804  
260-214-1477
- Better World Botanicals (Booth 62-63)..... 13**  
4940 W 400 S, Topeka, IN 46571  
260-383-2061
- Bravenly (Booth 52)**  
31030 Covey Rd, Leonidas, MI 49066  
574-584-5774
- BreatheEasy Mold Solutions (Booth 20B)**  
1300 E Country LN, Shipshewana, IN 46565  
260-350-9874
- Centropix (Booth 60-61, 84-85)**  
66695 CR 37, Millersburg, IN 46543  
574-238-6437
- Chupp's Herbs & Fabrics (Booth 10-11)**  
27539 Londick Rd, Burr Oak, MI 49030  
269-489-8905
- Community Health Clinic Inc (Booth 3)**  
730 E North St, Shipshewana, IN 46565  
260-593-0108
- Cookware-Cutlery Products LLC (Booth 57-58)**  
1515 Bond St, Niles, MI 49120  
574-261-0235
- CountrySide Produce Market (Booth 18)**  
0915 E 200 S, LaGrange, IN 46761  
260-499-4009
- Crossroads Health & Cosmetic Center (Booth 1038)**  
21764 Omega Ct, Goshen, IN 46528  
574-891-4920
- DoTerra (Booth 51)**  
1156 Wattles Rd, Sherwood, MI 49089  
260-350-7023
- Dr. Ardsma's Vitamins (Booth 70)..... 135**  
301 E Jefferson St, Loda, IL 60948  
217-803-0212
- Elite Nutrition LLC (Booth 76)**  
8868 N 650 E, Odon, IN 47562  
812-636-5055
- Eurosteam Iron (Booth 28)**  
0680 N SR 5, Shipshewana, IN 46565  
260-585-7021
- Evolve Chiropractic (Booth 78)**  
5218 Beck Dr, Elkhart, IN 46516  
574-218-0572
- Farm & Garden Books (Booth 53-55)**  
413 W. Lake St, Topeka, IN 46571  
800-728-8860
- First Choice Mattress (Booth 1-2) ..... 128**  
6838 Cutter Rd, Apple Creek, OH 44606  
330-201-0337
- Fish Lake Organic Berries (Booth 1011)**  
62801 E Co. Line Rd, Goshen, IN 46528  
574-642-3014
- Healthy Home (Booth 1043)**  
400 County Rd 175, Westcliffe, CO 81252  
719-221-4322
- Heritage Bookstore (Booth 31-32)**  
1430S 100W, LaGrange, IN 46761  
260-350-5971
- Heritage Designs LLC (Booth 1003-1004)**  
2020 N 850 W, Shipshewana, IN 46565  
260-350-2485
- His Saving Grains (Booth 1009-1010)..... 14**  
66247 County Road 33, Goshen, IN 46528  
574-501-4464

- Imeyin All Natural Products LLC (Booth 6)**  
10525 E 350 S, LaGrange, IN 46761  
260-585-7432
- Imperial Associates (Booth 36-37)**  
1236 Clark St, Holland, OH 43528  
419-986-3025
- ITC Immunity Therapy Center (Booth 41).. 10,129**  
680 Old Telegraph Canyon Rd,  
Chula Vista, CA 91910  
619-929-3430
- J & J Eyewear / Fish Lake Variety (Booth 8-9) ..... 136**  
1425 S 400 E, LaGrange, IN 46761  
260-463-4097 x1
- J&R Miller Enterprises (Booth 64)**  
110 Mishler Rd N., Hartsville, OH 44632  
260-350-3422
- JC Schrock Enterprises (Booth 86-88) ..... 136**  
6055 S 450 E, Wolcottville, IN 46795  
260-854-2061
- Juice Plus (Booth 75) ..... 16**  
4985 N 100 E, Howe, IN 46746  
260-977-9238
- Kauffman's Treasures LLC (Booth 97-100) .... 130**  
2428 Hague Rd, Orwell, OH 44076  
440-437-3600
- Legacy Chiropractic Clinic (Booth 21)**  
2180 N 700 W, Shipshewana, IN 46565  
260-768-4712
- Legacy Furniture (Heartland Mattress) (Booth 14-16)**  
1770N 500W, Shipshewana, IN 46565  
260-768-7875
- Lehman's Variety Store (Booth 29-30) ..... 138**  
2825W 350S, LaGrange, IN 46761  
260-463-7469
- Lemongrass Spa Products (Booth 1041)**  
68286 CR 29, New Paris, IN 46553  
574-349-8878
- Lifewave Patches (Booth 1039)**  
9775 Business Park Ave, San Diego, CA 92131  
941-713-7300
- Live PURE (Booth 42-43)**  
988N 2050 E Rd, Shelbyville, IL 62565  
217-821-5046
- Melaleuca (Booth 1040)**  
66 Hill Rd, Bernville, PA 19506  
717-926-5851
- Michiana Dental Implants (Booth 69)**  
7130 Heritage Square Dr, Granger, IN 46530  
574-398-3384
- Miller's Organo Coffee (Booth 1042) ..... 133**  
S 5841 CR D, Rock Springs, WI 53961  
608-943-6335
- Natural Hope Herbals (Booth 66)**  
670 Phillips Rd, Millersburg, PA 17061  
717-692-5100
- Nature's Warehouse (Booth 83)**  
6403B State Route 83, Holmesville, OH 44633  
234-354-0305
- New Light Health (Booth 79 - 80) ..... 133**  
PO Box 80, Elliottsburg, PA 17047  
717-692-3500
- Northern Indiana Hearing Center (Booth 33) . 136**  
2406 Mishawaka Ave, South Bend, IN 46615  
574-383-5595
- Northern Nutrition (Booth 34-35) ..... 12,134**  
2195 N 750 W, Shipshewana, IN 46565  
260-768-4868
- Norwex (Booth 44)**  
7365W 300S, Topeka, IN 46571  
260-593-3292
- NucleoGenex (Booth 39-40).....11,131**  
26841 SR 621, Fresno, OH 43824  
740-552-1287
- Old Colony Mennonite Support (Booth 1044)**  
PO Box 525, Nappanee, IN 46550  
574-221-2154
- Pampered Chef (Booth 77)**  
72019 CR 43, Syracuse, IN 46567  
260-350-3423
- Partner.co - body balancing drops/weight loss (Booth 20A)**  
748 Mountainview Drive, Westerville, OH 43081  
614-216-0247
- Plain & Simple (Booth 1014)**  
3320 N 850 W, Shipshewana, IN 46565  
260-499-0772
- Princess House (Booth 12)**  
7865W 750N, Shipshewana, IN 46565  
260-361-0148
- Rainbow of Ship (Booth 1012)**  
645 Windy Cove Ct, Mishawaka, IN 46544  
574-222-7338

<b>Real Time Pain Relief (Booth 56)</b> 332 Homewood Dr, Bolingbrook, IL 60440 630-677-7545	<b>The Wellness Way (Booth 103-104) ..... 11,132</b> 250 E. Berkshire Dr., Shipshewana, IN 46565 260-593-1560
<b>Red Barn Bath &amp; Body (Booth 13)</b> 6215 CR 35, Auburn, IN 46706 480-322-5448	<b>True Essentials (Booth 101-102)</b> 12888 HWY 2, Moulton, IA 52537 641-929-3078
<b>Reign Napkins &amp; Precious Tots (Booth 4-5) .... 15</b> 311 E Main Street, Odon, IN 46751 260-585-7599	<b>Tupperware (Booth 48)</b> 67265 SR 13, Millersburg, IN 46543 574-642-4493
<b>Riehl's Herbs (Booth 89)..... 136</b> 0190N 600W, LaGrange, IN 46761 260-768-9109	<b>Valley View Health Clinic (Booth 22-23) ..... 16</b> 32327 State Route 643, Fresno, OH 43824 330-897-3232
<b>Rosewood Coffee Roasters (Booth 49) ..... 134</b> 3680 Oak Hill Rd, Stockport, OH 43787 740-629-2592	<b>Versiti Blood Center of Indiana (Booth 65) 12,135</b> 3450 N Meridian, Indianapolis, IN 46208 269-870-6257
<b>Simple Foods Cooking LLC (Booth 19-20)</b> 9223 County Road 245, Fredericksburg, OH 44627 330-473-5881	<b>Vista Life (Booth 71-72)..... 10,125</b> 8374 E Main St, Clymer, NY 14724 716-488-6706
<b>Simply Delightful Freeze Dried Foods LLC (Booth 45)</b> 5958 4th Rd, Bremen, IN 46506 574-546-3771	<b>Vollara's Machines &amp; Products (Booth 50) 14,137</b> 7845 W 300 S, Topeka, IN 46571 260-593-0413
<b>Simply Paper &amp; Supplies (Booth 46-47)</b> 1920W 100S, LaGrange, IN 46761 260-463-0141	<b>W &amp; L Nutrition (Booth 67-68)</b> 7717 W 1200 N-57, Topeka, IN 46571 260-593-0493
<b>Sisel (Booth 81-82) ..... 135</b> 6605 W US 20, LaGrange, IN 46761 260-214-1071	<b>Yoder's Nutrition/The Hitching Post (Booth 90-93)</b> 20927 Ice Ave, Bloomfield, IA 52537 641-722-3357
<b>Tension Tamer (Booth 73-74)..... 126</b> 4325 S 00EW, LaGrange, IN 46761 260-463-0113	<b>Zimmerman Sugarbush (Booth 17)</b> 5833 18th Rd, Argos, IN 46501 574-498-6898
<b>The Proofing Basket (Booth 6)</b> 1990 W SR 120, Howe, IN 46746 260-336-0934	

If you don't make time for  
 your **WELLNESS**, you will  
 be forced to make time for  
 your **ILLNESS**.



**BUILD STEEL  
BUILD STRONG**

615 W Elnora St, PO Box 386 Odon, IN 47562

Office: (812) 687-7440 Fax: (812) 687-7788

Email: [info@stollsteel.com](mailto:info@stollsteel.com)

*“every project is designed and engineered for your specific location and purpose”*

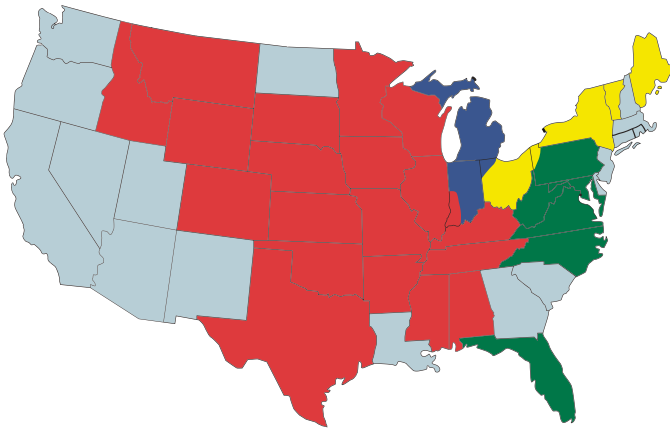
**The Many Benefits of a Pre-Engineered Steel Building:**

**\*Affordability \* Flexibility \* Durability**

**Lower construction, maintenance, and repair costs**

*“our goal at Stoll Steel is to offer a steel building package and to ensure that you have a building you will enjoy a lifetime”*

# TRADE EXPRESS



*Advertising That Works!*

## Central & Western

3240 E CR 1550 N  
Humboldt, IL 61931  
Ph: 217-856-2328  
Fax: 217-856-2330  
workcenter246@gmail.com

## Michiana

555 E 300 S  
LaGrange, IN 46761  
Ph: 260-463-4349  
Fax: 260-465-0144  
michianatradeexpress@gmail.com

## Ohio Northeastern

3621 CR 141  
Sugarcreek, OH 44681  
Ph: 330-987-1084  
Fax: 330-989-0559  
ohiotradeexpress@gmail.com

## Penn Central

PO Box 22  
Quarryville, PA 17566  
Ph: 717-715-3440  
pctradeexpress@gmail.com

Booths 433 - 434, 475 - 476

Silver Sponsor



# ABC Saw & Tool

*Your Leader in Sharpening Quality & Service Since 1968*

2436 Eddy St., Elkhart, IN 46516, Tel : (574) 970 0397

## Annual TENRYU Saw Blade Sale



### Woodworking

Cabinetry, Trim Carpentry,  
and General Construction

For Circular Saws, Miter Saws,  
Table Saws, Radial Arm Saws,  
Straight Line Rip Saws, etc.

- Signature GOLD MEDAL 10" Combination Blades (.110", or .125" Kerf)
- Premium Trim Carpentry Blade Series with Negative Rake and HI-ATB Grind (10" and 12" Diameter)
- Full Line-up of Aluminum Cutting Saw Blades (5-3/8" up to 20" Diameter)



### Metalworking

Steel, Aluminum,  
and Stainless Steel

For Circular Saws, Miter  
Saws, Dry Cutters, etc.

**ARNTZ**  
America's #1 Band Saw Blade



Great Buys at the Show :

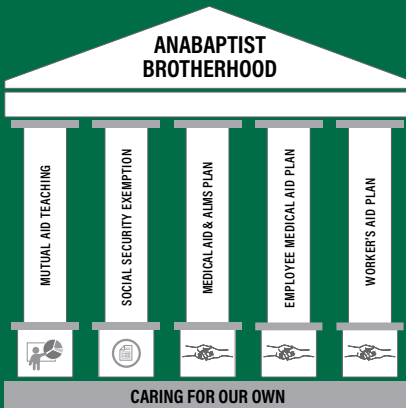
## Anabaptist Brotherhood

caring for our own



### Mission

To promote brotherhood mutual aid by providing Biblical two-kingdom teaching and a structured approach to "caring for our own," thereby preserving the Social Security Exemption.



### Pillars Definition

1. Provide Biblical stewardship teaching and materials on issues surrounding mutual aid and social security.
2. Preserve the IRS Form 4029 exemption.
3. The *Medical Aid & Alms Plan* enables Anabaptists to support and share each other's medical and alms burdens.
4. The *Employee Medical Aid Plan* is for Anabaptist-owned businesses that wish to provide medical aid as part of their employee benefits.
5. The *Worker's Aid Plan* is specifically for workers that are social security exempt and offers medical aid for workplace injuries, lost wages during recovery and long-term disability aid.

Thomas Mast • 574.354.4445 | P.O. Box 45 • Nappanee, IN 46550

info@AnabaptistBrotherhood.org | AnabaptistBrotherhood.org



Since 1988 We've Been Making Tools  
so Good we Guarantee 'em for Life!

## Do you Drill, Cut, or Grind?



Drill Multiple Materials!



Endlessly Cut + Grind in 10 Sizes!

## We've got the tools to get the job done!

- **Multipurpose** Drill Bits
- HDII **Endless** Cutting + Grinding Wheel
- Biter **Patented** Drill-Mounted Sheet Material Cutter
- Rover Bits **Patented** to Drill Vertically / Cut Horizontally
- and **More in action at the show!**

BAD DOG TOOLS.com

## DOES YOUR COMMERCIAL ROOF NEED ATTENTION?

Call Today! (574) 536-4326



OVERLAYS



REPAIRS



INSTALLS

Proven Single-Ply Roofing Systems for Commercial & Industrial Roof Applications



# SOLVE ALL YOUR COMMERCIAL ROOF LEAK PROBLEMS

Duro-Last's roofing systems have a 40 year track record and have proven to be serviceable, flexible, and durable, covering billions of square feet of roof.

**(574) 536-4326**



Booths 533-534 | Booth 621-622

Bronze Sponsor

# ARE YOU RUNNING YOUR BUSINESS OR IS IT RUNNING YOU?

Clarify. Simplify. Achieve your Vision.



Maybe you grapple with some of these challenges:

- Lack of control** over time, markets or your company.
- People** who don't listen, understand or follow through.
- Profit** that's inconsistent and/or there's not enough.
- Growth** is happening, but you can't break through to the next level.
- Quick fixes** that come-and-go, bringing little change with continued frustrations.

**Nathan Nisley**



Profession  
EOS®  
Implement

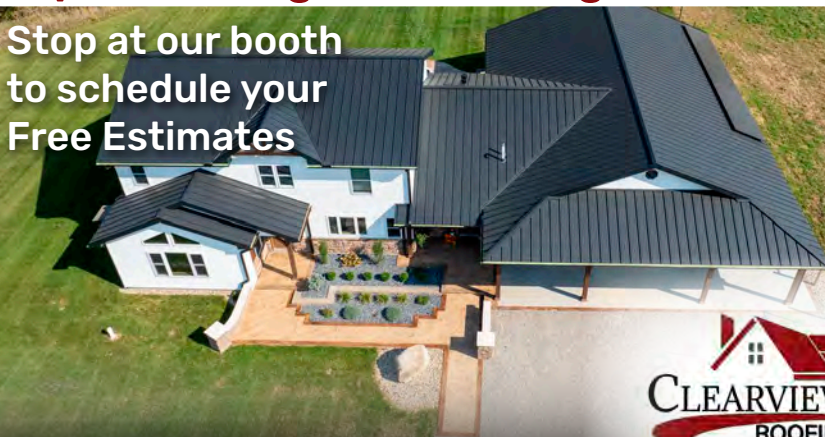
**574-821-2000**

Stop in or call Nate to see how you can regain control of your business and your life.



## Specializing in Standing Seam Metal

Stop at our booth to schedule your Free Estimates



Maynard Miller  
1485 S 300 W  
LaGrange, IN 46761

**260-214-4414**  
**F: 260-463-3788**





**COMPLETE**  
*Designs*

**Decorative & Functional  
Custom Hand Railings**  
and Metal Fabricating



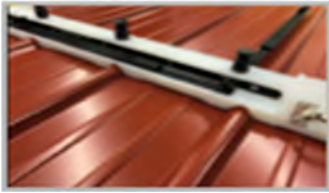
- Custom and Standard Railings
- Interior & Exterior
- Aluminum and Steel
- Custom Stairways
- Custom Projects
- Finish Options
- Installations



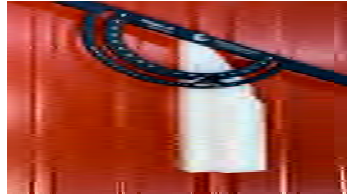
11750 W US 20  
Middlebury, IN 46540  
**Phone: 574.206.6937**

Bronze Sponsor

WELCOME TO THE EXPO! CHECK OUT THE TOOL LINE AT OUR BOOTH.



**Ridge-R3:10.** Improve safety, speed, and accuracy. Punch holes quickly with exact spacing of rows. Do up to 6 -- (9" o/c) panels at one time.



**Ridge -L9.** Mark your 9" o/c panels consistently. Degrees or pitch for gables, valleys or as needed.



**Ridge -LSS.** Used for Standing Seam panels to accurately mark angles as needed.



CountyLineConcepts LLC  
[info@toughtradetools.com](mailto:info@toughtradetools.com)  
 11921 N Winans Rd Alma, MI 48801  
 989-859-2168



CONTEMPORARY OR RUSTIC DECORATIVE SURFACES | HARDWOOD LUMBER | PLYWOOD | MDF | TFL

Spectacular Furniture and Cabinets **Start With**

**HARDWOODS®**

Materials That Inspire



CHICAGO, IL  
800-323-2203

ELKHART, IN  
574-295-7600

GRAND RAPIDS, MI  
616-784-9800

MATTOON, IL  
217-234-9663

MINNEAPOLIS, MN  
763-428-3153

888-826-5528 • [hardwoods-inc.com](http://hardwoods-inc.com)



# CUSTOM CALENDARS

looking for a calendar that is exclusively yours? TRY US!

**HUNDREDS OF HIGH QUALITY PICTURES TO CHOOSE FROM**  
 Full Color Custom Designed Imprint  
 1 Time, 1st Time Setup Charge, if there are no imprint changes  
 130# Cover Stock Paper  
 Wire Binding for a Classy Look  
 Designed + Printed in Holmes County, Ohio  
 Excellent Way to Showcase your Business Year Round



Bronze Sponsor

MWTX2501

## Custom Nameplates

# identiGROW™

Identify your products. Grow your business.

**FREE samples  
and information!**



Jon



Wendell



**Contact Us Today!**

**540.283.9193**

[sales@identigrow.com](mailto:sales@identigrow.com)

identiGrow

PO Box 50

Port Republic, VA 24471

[www.identigrow.com](http://www.identigrow.com)

*Structures - Furniture - Garage Doors - HVAC*  
**Connect your name with every masterpiece!**

Booth 139 | Booth 138



# **Hydro Heat** Inc.

*"Your comfort is our goal!"*

Hot Water Heat • Gas Lines • Fresh Air Venting

**Mark Otto**

Ph (260) 768-4809 • Fax (260) 768-4382  
10620 W 050 N • Middlebury, IN 46540

## **Conestoga Champion Outdoor Boilers**

See  
the Champion  
furnace in  
operation at  
the Midwest  
Tool Expo!

**Less Smoke = More Heat**

**Call us for all of your  
HOT WATER HEAT needs!**

*Specializing in Gravity Flow Hot Water Heat Systems*

**Any Kind of Circulator Systems!**

- 12v Pumps
- 110v Pumps
- Air Pumps
- Cast Iron Radiators

**LP, Natural Gas or Wood/Coal Boilers**

# Sawdust Hoppers with Pneumatic Disconnect



4 yd. Iron Bull Hopper designed for a F450 Comia Dust Collector



Air powered lid is raised up while hopper is removed to dump



Get your hoppers now!  
**765-597-2480**



**THE ULTIMATE CUSTOMIZABLE CAD/CAM/CIM PLATFORM FOR WOODWORKERS**

Streamline your design, drafting, estimating, engineering, reporting, and manufacturing processes.



Discover your competitive advantage at [microvellum.com](http://microvellum.com)

+ 1 800.204.0913



Booths 813 - 816 | Booth 132

# Miller POWER LLC

# WATER STORM™ PRESSURE WASHERS



**HONDA**



Skid Loader Wired  
Rear View Camera System



**S**

**Shipeka**  
Cordless Tiller



**CALL OR VISIT**

Miller Power LLC | 6735 W 100 S Topeka, IN | 260-768-7002

See Us At Booth  
#s 831-834



*"Committed to Quality and Customer Service."*



## Custom Buggies & Repairs

Do You Need One Immediately?  
Check Out Our Ready-To-Go Stock:

- NEW • USED • REBUILT •

**NATE & SARA  
MILLER**

7040 W 200 S  
Topeka, IN 46571  
(260) 768-8055

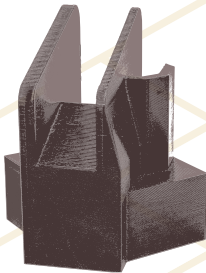


# Nighthawk 3D

*We specialize in making your parts  
the way you need them.  
Multicolor and multimaterial  
available!*



Part sizes up to 14"x14"x14"  
Quantities of 10-1000 parts



## Plastic Parts Manufacturing

Contact us:

Phone: 260-383-2008

Fax: 260-383-2009

Email: [derek@nighthawk3d.com](mailto:derek@nighthawk3d.com)

**SUBSCRIBE TODAY TO RECEIVE A COPY EVERY OTHER WEEK**

Bronze Sponsor



**MAILED  
EVERY  
TWO  
WEEKS**

**SEE US AT THE  
MIDWEST TOOL  
EXPO JAN.  
23RD - 25TH**



**Subscription Price:**  
 1 Year \$45.00  
26 Copies  
 2 Years \$80.00  
52 Copies  
**Canada Subscription Price:**  
 1 Year \$104.00  
in US Funds

## Plain Press

PO Box 422, Millersburg, PA 17061  
[subscriptions@plainpress.net](mailto:subscriptions@plainpress.net)

• Phone 717-750-2200  
• Fax 717-674-7835

# You Think it. We Create it.

Bring your ideas. We help with the design and take care of the manufacturing.

## *What's Possible:*

- Custom Plastic Injection Molding
- 3D Drawings, Prototypes
- Mold Designs
- Value Added Services
- Packaging, Labeling, Shipping



Here are a few examples of products currently produced by QP.

*Call today with questions or to get your project underway!*

Check us out online or contact us for more info!  
[www.qualityplasticsllc.com](http://www.qualityplasticsllc.com)

**330.695.5920**  
sales@qualityplasticsllc.com

Bronze Sponsor

## Had it with sanding dust? Bring in a pro.

- Sanding Tables
- Sanding Booths
- Inspection Lighting

**SAND PRO®**



### SANDMAN Products

*Sanding Tables, Sanding Booths, & Inspection Lighting*  
Ph: 800-265-2008 • info@sandmanproducts.com  
[www.sandmanproducts.com](http://www.sandmanproducts.com)



# Sunshine baskets

Hand woven NATURAL REED BASKETS

**WHOLESALE & RETAIL**  
Call for brochure



Over 70 Home Accessory Baskets



11020 W 400 S  
Millersburg, IN 46543  
Ph: 574-642-0599  
Fax: 574-642-0557



We partner with woodworkers by supplying custom sized drawer baskets to accent their furniture



## Spruce Lawn INDUSTRIES

Specializing in Dovetail Drawers



Custom made to your specs!

***"We'll focus on dovetails and the details."***

Be sure to stop by our booth and pick up your **10% discount coupon**



Brown Maple



Aspen



Oak



Poplar



Cherry



White Maple



Walnut

Local Delivery Available

**6545S 1200W**  
**Millersburg, IN 46543**  
**P 574-642-2682 • F 574-642-2683**

Bronze Sponsor

VISIT US AT BOOTH

**405**



## MILWAUKEE M18 FUEL COIL ROOFING NAILER



2909-20



12737 C.R. 30 | Middlebury, IN 46540

**CALL TODAY: (574) 642-0015**



**STARLIGHT UNLIMITED**  
95 Willet Street, Suite 1  
Fort Plain, NY 13339

Phone: 518-332-8151  
Fax: 518-993-5264

*Our goal is to provide provide the  
Plain communities with safe,  
dependable phones and reliable tech  
support.*

### Your one stop shop for phone products and services

- Portable Phone Kits
- Complete Business phone systems
- Black boxes (home phone device)
- Signal boosters
- Phone parts and accessories
- Desktop Phones
- Cordless Phones
- We have service plans available for each of the 4 big Networks in the US...



**T Mobile**

**verizon**

**AT&T**

**uscellular**



### Take your Business to the next level with our full-featured Business Phone systems!

- Desktop or Cordless phones (or both)
- Digital Receptionist
- Plenty of lines (Have 10 or more people on hold or talking if needed!)
- Transfer calls from one person to the next with the push of a button
- Shared or separate Voice Mail options
- Use a new number or port-in your existing number
- Intercom between users (Page back and forth between users, even if they are in separate locations)
- Lamp field Indicators (See when other users are on a call)



*Contact us today for a free quote!*



ICE FISHING BUNDLES



# GARMIN

AUTHORIZED DEALER

2025 HuntView Plus SD cards for all States!

We will update your Garmin device for \$20.00 (excludes return shipping cost)  
Mail or ship to:  
Straightline Enterprises  
11985 W 400 S Millersburg, IN 46543



ALPHA HANDHELD GPS

FREE SHIPPING ON ALL NEW GARMIN DEVICES!



MONTANA HANDHELD GPS



RINO HANDHELD GPS



RV AUTOMOTIVE GPS



BIKING GPS



LIVE SCOPE SYSTEMS



ETREX HANDHELD GPS

STRAIGHTLINE ENTERPRISES

Ph: (574) 642-0289

11985 W. 400 S. · Millersburg, IN 46543

Hours: Mon.-Fri. 7 AM to 4 PM Sat. 8 AM to 12 PM

# SUNRISE ENTERPRISE CONKLIN PRODUCTS

Diesel Plus  
4-Power D  
Fuel Mate  
4-Power G  
Rust Bomb  
Lube Oil  
Convoy 15w-40

We've got health and cleaning products too

Order your products early for delivery to the show!

CALL RAYMOND: 989-872-5216 Evenings • 989-550-1999 Days



Bronze Sponsor

# BUSINESS ADVERTISING

TO FIT YOUR VISION

Bronze Sponsor

DESIGNS WITH PURPOSE



Web Design



Photography



Branding



Printed Products

We've been providing marketing materials for those in the plain communities for over 8 years. Our new customers become our friends. We'd love to chat with you at booth #1048!

MIDWEST  
*Tool Expo*  
& Auction

**BOOTH #1048**



**zimmerman**  
design and photography

WWW.ZIMMERMAN.WIN | OFFICE@ZIMMERMAN.WIN | 606.448.9948

## Flackhill Lock-Mitre Machine

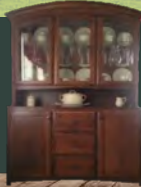


- Shipping Available
- Watch Machine In Action Before You Buy.
- Affordable

2 Heavy Duty 1 1/4" spindles  
 2 Cutterheads. Double sided stock feeder.  
 Adjustable to feed 1/2" to 1" stock.  
 Feeders have 8 rollers each.  
 No need to adjust for A & B cuts. 4" Dust Port.  
 Available in Lineshaft — Electric or Hydraulic.  
 Made by Flackhill Machine.

*Production Friendly — Do both sides at the same time.*

CUSTOM CABINETS



Bawling Acres Woodworking LLC

**Harley & Linda Beech**

0155 S. 1000 W.

Middlebury, IN 46540

☎ 260-535-0960

📠 260-768-7273



## Choice Cabinets LLC

Richard Helmuth | 61095 E Co Line Rd | Shipshewana, IN 46565  
 phone 574-825-0073 | fax 574-825-3700

## High Quality Aluminum Cabinets

*Manufactured Locally By Rock Run Cabinetry*

Let us help you  
 create a layout...



We have over 500 different cabinet box sizes available in multiple heights, widths and depths to create a cabinet configuration that's just right for your needs!



**Call Choice Cabinets TODAY**  
**574-825-0073**

Aluminum cabinets come standard with self-closing drawers and doors, leveling feet and heavy-duty shelving supports. Available in a variety of colors, shapes and sizes.



## Pocket systems for new space concepts

Blum's award-winning REVEGO is a unique pocket door system that blends style with functionality. The full overlay doors slide into a narrow pocket to open up work areas when you need them, and easily close the space off again when you don't. With its clean design, REVEGO is perfect for kitchens, pantries or multi-use spaces where functionality matters most. Elevate your cabinetry projects with this smart innovation.

Experience it for yourself at the Midwest Tool Expo, Booth 515.

7733 Old Plank Road Stanley, NC 28164 | 800-438-6788 | [Blum.com](https://www.blum.com)



# The Busy Beaver

## Family of Papers



Seven papers with pages and pages of useful advertising delivered to Amish and Mennonite communities all across North America and Canada! WOW!!



### Exposure for your products - Like no other...

With your Ad delivered to  
over 80,000 homes  
**EVERY 7 DAYS!**

Please contact  
Sales & Marketing Manager  
**Steven Troyer**  
**330-204-9199**

[sales@busybeaverpublications.com](mailto:sales@busybeaverpublications.com)

#### The Busy Beaver of PA+

(Also includes MD, DE, VA, NC & WV)  
PO Box 7930  
Lancaster, PA 17604-7930  
717-742-5230  
[ads@pabusybeaver.com](mailto:ads@pabusybeaver.com)  
**Delivered to over 22,000 homes EVERY 7 DAYS!**

#### The Busy Beaver of OHIO

P.O. Box 3  
Charm, OH 44617  
330-204-9199  
[sales@busybeaverpublications.com](mailto:sales@busybeaverpublications.com)  
**Delivered to over 19,000 homes EVERY 7 DAYS!**

#### The Busy Beaver of MICHIANA

61362 CR 42  
Goshen, IN 46528  
574-501-5105  
[ads@busybeavermi.com](mailto:ads@busybeavermi.com)  
**Delivered to over 16,000 homes EVERY 7 DAYS!**

#### The Busy Beaver of NEW YORK+ and CANADA

(Also includes ME & VT)  
Display Ads: 311 Applewood Ln.  
Hilton, NY 14468  
585-441-0083  
[ads@busybeaverny.com](mailto:ads@busybeaverny.com)  
Classified Ads: PO Box 8886  
Lancaster, PA 17604  
**Delivered to over 8,600 homes EVERY 7 DAYS!**

#### The Busy Beaver of TUCKESSEE and BEYOND

(Also includes IA, IL, MO, MS, WI, AR, TX, OK, KS, MN, CO, MT, ID, NE, SD & WY)  
Display Ads: PO Box 3046  
Clarksville, TN 37043  
800-886-2704  
[bbtuckessee@gmail.com](mailto:bbtuckessee@gmail.com)  
Classified Ads: PO Box 3  
Charm, OH 44617  
**Delivered to over 14,000 homes EVERY 7 DAYS!**

#### The Busy Beaver of FLORIDA

P.O. Box 3  
Charm, OH 44617  
330-204-9199  
[flsales@busybeaverpublications.com](mailto:flsales@busybeaverpublications.com)  
**seasonal from October - April Distribution of 6000 papers weekly EVERY 7 DAYS!**

#### The Busy Beaver EXTREME

7828 Township Road 568  
Fredericksburg, OH 44627  
Phone: 800-218-3405  
Fax: 330-470-2240  
[ads@busybeaverextreme.com](mailto:ads@busybeaverextreme.com)  
**Bi-Monthly publication delivered to over 85,000 homes**

*\$50.00 subscription rate applies to out of state (USA residents only). For delivery of The Busy Beaver™, please contact the appropriate publication.*

Helping thousands of people to grow their business. **Are you ready to grow yours?**



# Are your shields in place?



**YOU KEEP SHIELDS** over dangerous shafts and cutters in your shop. What about the machines in your office?

- Lock or remove unwanted features on computers and phones.
- Set up whitelists and internet content filtering for limited business connections.
- Use our private Daystar email service.

**Need computers? Tablets? Phones?** We configure devices to your requirements and ship to your door.

**Already have devices?** Contact us today to get started.



856-974-5335  
[sales@compassfoundation.io](mailto:sales@compassfoundation.io)  
[www.compassfoundation.io](http://www.compassfoundation.io)

Solutions for  
**Safeguarding Technology**  
 By and For the Plain Community



**FANTASTECH**  
 Energy Solutions

*"Experience the ultimate solar energy solution."*

**Call Us Today!!**  
**574.218.1973**

**Residential**  
**Agricultural**  
**Commercial**

**All New 300AH**  
**Battery W/Heater Pad**  
**and Active Balancing**

**Refrigerators & Freezers**

**All-In-One Battery Packs**







[www.DIEHLMACHINES.com](http://www.DIEHLMACHINES.com)

## **DIEHL MACHINES**

**A Division of Mereen-Johnson**

The industry's best straightline rip saw – affordable for small shops with guaranteed glue line accuracy, coupled with Diehl's legendary quality and durability.

Industries served: Furniture, Flooring, Cabinetry, Doors, Windows, Mouldings, Custom Millwork, Rough Mill

☎ 260.563.2102 📠 260.563.0206



**Rip Saws & Optimizing Systems**  
The Industry leader for shifting blade and dixed arbor multiple rip saws featuring unsurpassed glue joint accuracy, bullet-proof reliability, and lowest overall cost of ownership

[www.MEREEEN-JOHNSON.com](http://www.MEREEEN-JOHNSON.com)



## **Lasting Performance since 1905**

The industry's best straightline rip saw – affordable for small shops with guaranteed glue line accuracy, coupled with Diehl's legendary quality and durability.



**DIEHL MACHINES**  
A DIVISION OF MEREEEN-JOHNSON

Industries served: Furniture, Flooring, Cabinetry, Doors, Windows, Mouldings, Custom Millwork, Rough Mill

1-888-465-7297 | **MADE IN THE USA**



[www.DIEHLMACHINES.com](http://www.DIEHLMACHINES.com)

# Why was the hammer so good at making friends?

*Because it always knew how to hit it off!*

RECEIVE TECH NEWS AND THOUGHT-PROVOKING ARTICLES!  
SIGN UP TO RECEIVE OUR NEWSLETTER AT [WWW.EMYPEOPLE.NET](http://WWW.EMYPEOPLE.NET).

# Need a Partner

AS YOU NAVIGATE THE WORLD OF TECHNOLOGY?



INTERNET  
FILTERING  
SERVICES



FILTERED  
PRIVATE  
EMAIL



LOCKED  
INTERNET  
CONNECTIONS



FRIENDLY  
SALES & SUPPORT  
STAFF

**eMyPeople**   
*Your partner in safe technology solutions.*

We've been empowering  
businesses churches, and  
individuals with safe technology  
for more than 20 years!

[WWW.EMYPEOPLE.NET](http://WWW.EMYPEOPLE.NET) | [SALES@EMYPEOPLE.NET](mailto:SALES@EMYPEOPLE.NET) | 717.277.0200

**Stay Warm This Winter**  
with Magma buggy heaters

**\$25 Off Reg. Price**



**MAGMA**  
HEAT LLC

- Discreetly concealed under buggy
- Runs 20 hrs on one gallon of fuel

- Operates on lamp oil and 12V
- Easy to install on any buggy

Magma Heat  
Shipshewana, IN  
260-535-5001

# Helmuth

Since 1983

# Quality Power

**Generator & Electrical Services**

**Minimize Your Noise And Utilize Your Heat With Our Remote Radiator Genset**

Call us today to schedule your next project! **574-642-3174**

11665 W 500 S • Millersburg, IN 46543

**Licensed and Insured**

**Finally, brethren, whatsoever things are true,  
whatsoever things are honest,  
whatsoever things are just,  
whatsoever things are lovely,  
whatsoever things are of good report,  
if there be any virtue, and if there be any praise, think on these  
things... and the God of peace shall be with you.  
Where there's peace, there's sanctuary.**



## REVOLUTION IN PAINT DRYING SYSTEMS

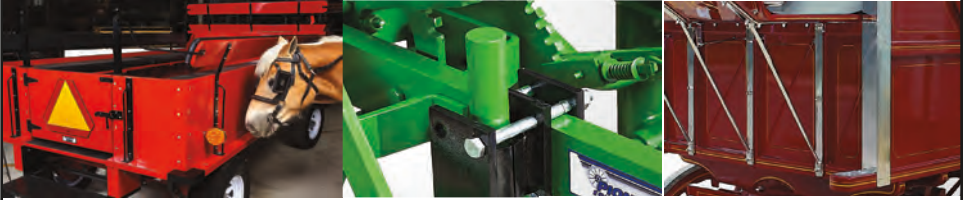
Our products are up to  
**80% MORE**  
efficient than convection systems.



▶ SCAN ME

1.866.GFC.OVEN | [WWW.GREENFASTCURE.COM](http://WWW.GREENFASTCURE.COM)

For an extremely durable, high-tech liquid coating,  
there's no better partner to finish your products than Hentzen Coatings.



**Contact Information:** Allen Cornelius, Technical Sales Representative |  
Industrial Division **M:** 330-275-0476 | **O:** 414-353-4200 | **F:** 414-353-0286 |  
acornelius@hentzen.com Hentzen Coatings Inc., 6937 West Mill Road,  
Milwaukee, WI 53218-1225



## MIDWEST TURNINGS, LLC

The Trusted Source For Furniture Components

DBA HOOSIER PEDESTALS, LLC

7900 W 650 S | TOPEKA, IN 46571

PH: 260-593-0631 | FAX: 260-593-0569

CNC ROUTING | TURNINGS | MORTISE & TENON JOINERY | PEDESTALS | TRESTLES

**Focus on three things: 1) praise to God,  
2) the presence of God, 3) and the promises of God**

Doing so will bring peace, a sense of sanctuary, security,  
and refuge.

Philippians 4:8-9 gives us this good promise.

# MAGAURA

## SHORT DAYS, MORE LIGHT.

Magnetic mount cordless  
tool battery powered lights.



Wireless Remote  
Controlled Tail Light Set

Flexible  
Work Light

### DEALERS WANTED

Contact us today to find a  
dealer or become a retailer.

### 717-733-0133

# DOVETAIL DRAWER BOXES

WE OFFER:

Scoop Fronts • File Drawers  
Pull-out Waste Bins - Single & Double  
Double Tier Utensil Boxes • Finished or Unfinished  
We Use Only a Beautiful High Quality Conversion Varnish  
1/4", 3/8" & 1/2" Drawer Bottoms



WE CAN NOW LASER  
YOUR LOGO  
ONTO YOUR  
DRAWER BOXES!

## WOOD SPECIES

Brown Maple, White Maple, Red Oak & White Poplar  
*Other Species available upon request.*

5/8" Stock

Come see us at  
booth #614 & 615!

We now manufacture  
some kitchen  
components!



QUALITY BUILT FOR A LIFETIME

Alvin Hochstetter | 6425 W 300 S | Topeka, IN 46571

Phone: 260-593-3255 | Fax: 260-593-3254

## WANT TO...

- ✓ STREAMLINE YOUR PAPERWORK?
- ✓ CREATE YOUR OWN FINANCIAL STATEMENTS?
- ✓ CUT YOUR BOOKKEEPING TIME IN HALF?

**ONE WRITES**  
BOOK KEEPING MADE EASY



Still Licking  
ONE-WRITE  
ENVELOPES?



NOW AVAILABLE IN  
**SELF-SEAL**



**INDIAN TRAIL**  
— TAX PREP —

**SAM4S**  
CASH REGISTERS



1545 W 450 N, Howe, IN 46746  
contact #: 260-585-7917  
vm #: 260-562-2241 ext. 2  
fax: 260-562-2242

**“Bookkeeping Solutions for Plain Businesses!”**



## INTERSTATE FLEET SERVICES

*Family Owned Leasing Company established in 1953*

We serve the vehicle and equipment needs of a wide variety of businesses from our Mt. Joy, PA location in Lancaster County.

Additional Services include:

- Used Car Sales
- Vehicle Upfitting
- Vehicle Graphics

Contact Steve Frey with inquires at  
**(215) 237-1961**



Call Myron at 574-849-6955 -or- Call Ken at 574-822-7535



# STEEL BLUE WORK SHOES!





# POWER DOG™

Outdoor Power Equipment

**Spring  
2025**

**Booth #439**



*\*Ask About  
Our  
Financing!*

**48" Lawn Mower**

# **Shepherd**

**By Kuhns Power Equipment, LLC.**

10101 Shively Rd., Nappanee, IN 46550



# MACHINE SOLUTIONS, LLC

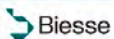
Providing World Class Solutions



Hush High Flow 1500



Vecoplan® 1100 Easy Grinder



Viet S2

## SEE US AT BOOTHS #805-808

### Why You Should Choose Machine Solutions



#### Expert Sales Team

We have over 45 years of combined experience in Wood Manufacturing Machinery.



#### New & Used Machinery

Representing 20+ machinery companies, we offer a variety of NEW & USED machine options so we can meet our customers where their needs are.



#### Skilled Service Dept

Technical knowledge, quick response time and affordable rates have been core components to supporting our customers since 2009.



812-559-0606



[www.machinesolutionsllc.com](http://www.machinesolutionsllc.com)



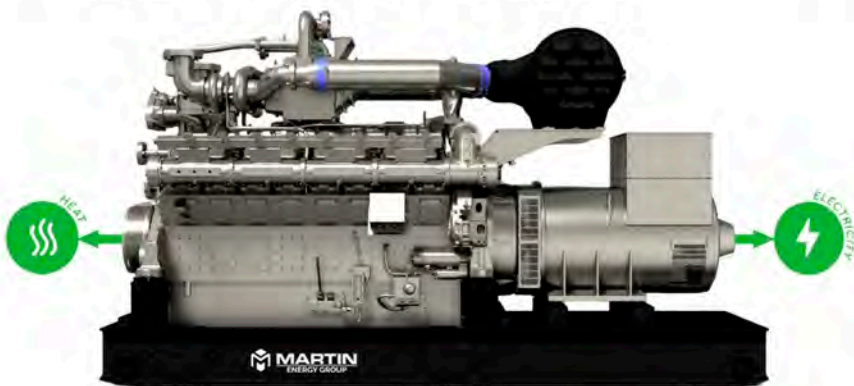
1110 Vine St, Jasper, IN

# Your Reliable Power Companion!



## Electric Generator Manufacturing & Service

Our expertise lies in providing energy solutions through cogeneration, power generation, demand response, microgrids, and energy from waste. Our Combined Heat and Power (CHP) systems capture and utilize heat from electricity generation, reducing waste and emissions, and saving costs.



Mid-Atlantic  
717.738.0010

Midwest  
314.300.7700



[martinenergygroup.com](http://martinenergygroup.com)

# METALpro

**HYDRAULIC IRONWORKERS & BENDERS**

**USA MADE | DURABLE | AFFORDABLE**

## IRONWORKERS MODELS

### MP4000 - 40 TON IRONWORKER



**OPEN CENTRAL WORKSTATION  
PUNCH 1/2" MATERIAL  
110V SINGLE PHASE - 15 AMP**

### MP4000FS - 40 TON IRONWORKER



**6" SHEAR (FLAT BAR, ANGLE, ROD/SQUARE)  
PUNCH 1/2" MATERIAL + SHEAR 3/8" MATERIAL  
110V SINGLE PHASE - 15 AMP**

### MP4500FS - 45 TON IRONWORKER



**8" SHEAR (FLAT BAR, ANGLE, ROD/SQUARE)  
PUNCH & SHEAR 1/2" MATERIAL  
110V SINGLE PHASE - 15 AMP**

### MP5000FS - 50 TON IRONWORKER



**12" SHEAR (FLAT BAR, ANGLE, ROD/SQUARE)  
PUNCH & SHEAR 1/2" MATERIAL  
110V SINGLE PHASE - 15 AMP**

## BENDER MODELS

### MP9000 - 90 DEGREE PIPE AND TUBE BENDER



**1/2" - 2" ROUND PIPE AND TUBE  
110V SINGLE PHASE - 15 AMP**

### MP9500 - 180 DEGREE PIPE AND TUBE BENDER



**1/2" - 2" ROUND PIPE AND TUBE  
1/2" - 2" SQUARE TUBE  
110V SINGLE PHASE - 15 AMP**



**SHOW SPECIAL  
DEALS**

**ALL MACHINES  
110V-1PH**

**POWER WITH  
GENERATOR OR  
INVERTOR**



**QUESTIONS?  
CALL 262-679-0504**

# WHITE INSULATED LINER PANELS

**5%**  
off full bundle  
quantities



## Quantity Discounts!

- Lengths available in 2' increments from 8' to 18'
- Three widths to choose from:
  - 18" - 54 panels per bundle
  - 21" - 36 panels per bundle
  - 24" - 36 panels per bundle
- R8, R12 & R17 Insulation
- 27 ga. Painted Galvanized Steel
- Delivery and Fasteners Available!
  
- Insulates and lines, all in one shot, saving you time, and money.
- Minimal exposed fasteners.
- Brighter and easier to clean than G-rib
- Textured surface hides watermarks

**Michiana**  
**FARM SUPPLY**

0105 E 200 N, Lagrange, IN 46761  
F 260-463-8116

**Call Today.**  
**260-463-8113**

## MIDWEST MACHINERY

SALES & SERVICE

Providing quality new and used Machinery



Representing: Anderson CNC Routers, Striebig Vertical Panel Saws, Enteco Dust Collectors, Joos Hot Presses, and a full line of conventional machinery.

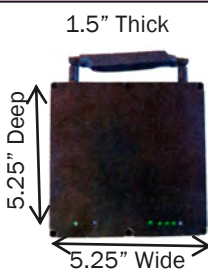
## Jameson Schrier

📍 3404 Busch Drive Suite C  
Grandville, MI 49418

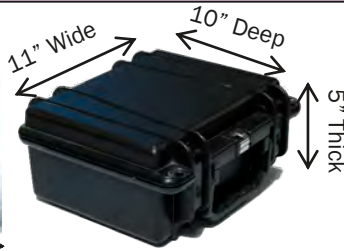
☎ (616) 826-0641  
✉ jameson@mwmachinerysales.com

# Want a Phone Without Internet

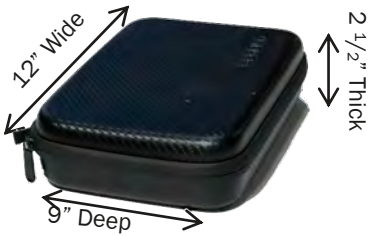
## Choose Your Case



Compact



Hard Case



Zipper Case

## Choose Your Handset

**Rugged**

**R700**

- 500 Contact Storage
- Bluetooth
- Built in flashlight

**E630**

- 200 Contact Storage
- Built in flashlight

**SL800**

- 500 Contact Storage
- Bluetooth



- By the Minute - 5\$/Month + 2¢ per Minute\*
- Unlimited - 23\$/Month\* (\*Plus Tax)

Michiana  
Phones  
Black Box



F1 Horizon  
Light weight



Sunbeam



F1 Pro  
Heavy Duty



DuraXV Extreme+  
Secured Device

## Michiana Flip Phones



**SOCKET PLUS**  
MADE IN USA

Stop By to See  
Our Electric Model

**Loaded with Quality Features!**

- Powerful Customized 1 hp Souix Motor – Eliminates Stalling!
- SMC Brand Pneumatic Components Throughout – It's Durable
- Fast and Smooth Operation – Cycle Time as Low as 2 Seconds!
- Streamlined, User Friendly Design
- 1/2" – 1 1/2" Stock Capability – It Can Get YOUR Job Done!



Available in  
Foot Pedal Actuated:  
Auto-Cycle, Semi-Automatic  
or Handle Actuated!



10780 W 1100 N, Nappanee, IN 46550  
Ph.: (574) 646-2900 • Fax: (574) 646-2904

**BE SURE TO VISIT OUR BOOTH AT THE SHOW!**

*Streamline Your Shop With 1/4" Mini-Flex Shaft & 1/4" Tools!*



Motor Mounts Outside of a Wall  
to Drive Your Washing Machine!



Fully Serviceable  
and Repairable



1/4" – 5/8" Shaft Sizes  
to Cover Your Needs!  
– In Stock –



Many Different Tools  
for Sizes 1/4" – 1/2"  
– In Stock –



Specialty & Custom Inquiries Welcome!  
Call for Complete Product Catalog...



10780 W 1100 N, Nappanee, IN 46550  
Ph.: (574) 646-2900 • Fax: (574) 646-2904



441

- Single Needle Walking Foot



1508 NH

- Single Needle Walking Foot
- Top Load Large Bobbin



2810-7X

- Single Needle Walking Foot
- Extra Large Top Load Bobbin

**\*\*More Models in Stock\*\***

- Repair all Makes and Models
  - Commercial and Household
  - Parts—Commercial & Household
  - Notions
  - KAI Scissors
  - Air Motor
  - Line Shaft
- } Available on Industrial Machines*



0485 W. 200 S.  
LaGrange, IN 46761

Ph: 260-499-3136  
Fax: 260-499-3125

**JANOME**

Janome Sewing Machines in Stock

For more information call or write for a brochure



**SUPERIOR**  
DECK SOLUTIONS



- Waterproof • Low Maintenance • Walkable Vinyl Roofing •
- Boat House Decking • Cool-Step Technology •

**Waterproof your deck.  
Low maintenance.**

Lavern Kauffman  
260-562-2800

*Superior Deck Solutions*  
k2.lavern@outlook.com

Gene Kauffman  
574-238-8783



# A Hand Up, not a Hand Out!

Give a man a fish,  
Feed him for a day.

Teach a man to fish,  
Feed him for a lifetime.  
*-unknown*

**Visit our booth  
at the expo!**



**OPEN  
HANDS**

PO Box 180, West Milton, PA 17886  
(570) 800-2123 | [openhands.org](http://openhands.org)

**Developing community and  
reducing poverty through  
Christ-centered savings groups  
and training programs.**

## **Help those in poverty help themselves!**

Sponsor Bible-based stewardship and small business training for savings group members.

To donate, send your check to:  
PO Box 180, West Milton, PA 17886.

Online donations accepted at [openhands.org](http://openhands.org)  
Or give via phone at (570) 800-2123.

To donate anonymously to Open Hands,  
contact Anabaptist Foundation (call  
800-653-9817 or email [giffund@afweb.org](mailto:giffund@afweb.org)).

Are you weary of charity that results in dependency? Join us in teaching men to fish by creating local savings groups in Haiti, Latin America, Africa, and Asia. We invite you to partner with us to work alongside Anabaptist missions to help give a hand up to those in poverty.

Your donations provide the means to hire and train national Christians to form and mentor savings and credit groups in association with local churches. The group members are taught from a Biblical perspective how to save their own money to provide for their needs. They also make loans to each other and are taught how to use these loans to generate income through small businesses.

**Hand a man money, undermine his dignity.  
Guide a man to save, rescue him from dependency.**

**\$36 a Year—Sign up at the show to get 13 issues for the price of 12!**



Plain Direct, PO Box 446,  
Blue Ball PA 17506. Or  
email them to  
PlainDirect@RopenMail.com.  
Fax 717-256-7545  
Phone 717-484-9581.  
PlainDirect.com

**Hunting, Fishing, and other outdoor articles about Alaska, by Matt Snader and other authors!**



**Installing Cabinets,  
Doors, Staircases,  
Trim, Beam Covers,  
Post Covers, and Gable Brackets**

*Quality and  
Satisfaction  
is our #1 Goal*

***Come see us at our booth!***

**PRECISION  
INSTALLATION, LLC**

Ph: 260-214-0078 • Fax: 260-341-7350  
3460 W. 700 S. Topeka, IN 46571

# NEED A TABLE BASE?



RHP SERIES  
ROUND  
HAIRPIN LEG



RHP SERIES  
ROUND  
HAIRPIN LEG



TTHP SERIES  
TRIPLE TWIST  
HAIRPIN LEG



MHP SERIES  
MISSION  
HAIRPIN LEG



MMHP SERIES  
MODERN MISSION  
HAIRPIN LEG

*Find us at the Buckeye Hardware booth!*



MRHP-02



MRHP-04

MINI ROUND HAIRPINS



UB SERIES  
U-BASE



X-SERIES  
X-BASE



phone 330.473.1478

Contact your distributor  
Buckeye Hardware Distributing  
1465 Township Road 178  
Baltic, Ohio 43804  
330.897.0017

# SALICE

David Preston

**SALICE AMERICA Inc.**  
2123 CROWN CENTRE DRIVE  
USA - CHARLOTTE, NC 28227  
Tel. 1-800-222-9652  
Tel. +1 704-841-7810  
Cell. +1 704-713-8332  
Fax +1 704-841-7808  
david@saliceamerica.com  
www.saliceamerica.com



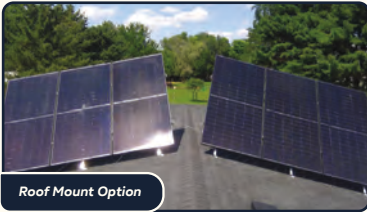
## Wellspring SOLAR, LLC

📍 1085 N 850 W  
Shipshewana, IN 46565  
🕒 7a - 3p MON - FRI  
✉ info@wellspringllc.us  
☎ (260) 768-7335  
📞 260-264-6741

### OFF-GRID SOLAR

With our Off-Grid system, enjoy the freedom that comes from complete energy independence.

This system is engineered to give you control over your energy needs, providing reliable, self-sustaining power that keeps your home running smoothly without relying on the grid.



### BATTERY STORAGE

With ample battery storage, our Off-Grid system allows you to store excess solar energy generated during the day for use at night or during cloudy periods.

This high-capacity battery bank ensures that your energy supply remains stable, providing a continuous power source even when the sun isn't shining.



SOLAR SOLUTIONS WITH REAL VALUE



**SAWSPEC.COM**

## SAW & SPECIALTY CORPORATION

Precision Sharpening & Reconditioning for Every Industry

**1-800-SAWSPEC**  
**WWW.SAWSPEC.COM**



*Teaching Stewardship, Transforming Villages*

## How can we help those in chronic need without creating unhealthy dependency?

The SALT Microfinance program was developed in response to this common question.

### Our two main objectives

- Help people discover sustainable ways to provide for their families.
- Model and teach a Biblical way of life.

## Visit our booth to learn more about our work around the world.



Scan this code to learn more about SALT or to contribute to the work.

**Christian Aid Ministries**  
P.O. Box 360 | Berlin, Ohio 44610  
330.893.2428  
[christianaidministries.org/salt](http://christianaidministries.org/salt)



Liberia SALT savings group members opening the money box.

A PROGRAM OF



# Email, Spreadsheets, Record Keeping, File Sharing, Etc....



**Reliable work  
stations to get  
the job done.**



Featuring our very  
own custom built  
pet software



**Petco Pro**

Portable storage devices  
shipped to your door.



**Merchant  
service**



**Don't Get Caught!**  
Backup your data



**Sun Lite  
Enterprise LLC**

P O Box 441,302 S Spruce Street, Gratz PA 17030

**Sales**

Phone: 717-862-5959 Ext.1

Email: [sales@sle.email](mailto:sales@sle.email)

**Hp Officejet  
Printers**

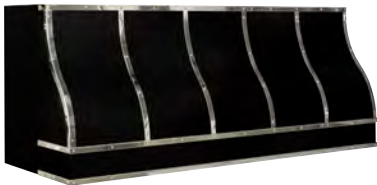


**IF YOU CAN DREAM IT WE CAN BUILD IT!**



*Custom Metal*  
**KITCHEN HOODS**

Accent your kitchen with a beautiful metal range hood.  
Fully customized to your specs and style.



3070 W 350 S • Topeka, IN 46571

**GIVE US A CALL TODAY**  
**(260) 463-4026**





# WEAVER METALWORKING LLC

## NEW & USED METAL FABRICATING MACHINERY

- Press Brakes • Shears
- Plate and Angle Rolls • Saws
- Ironworkers • Punch Presses
- Hydraulic Presses • Notchers
- Punches • Tube Benders
- Pipe Threaders
- Sheet Metal Machinery
- Lockformers • Hand Brakes
- Lathes • Milling Machines
- Drill Presses • Grinders
- Air Compressors
- Shop Presses • Belt Sanders
- Mig, Tig, Stick, Engine Driven & Spot Welders

New, Used & Reconditioned  
Press Brake Tooling  
(In Stock)



**800 W. Lexington Rd.**  
**Lititz, PA 17543**  
**(717)625-0302**  
**Fax: (717)626-0307**



# WHITETAIL LIFE



Your Success Starts Here

## Bi-Monthly Magazine Don Higgins, Editor



### Unmatched lineup of proven authors,

- Bobby Worthington
- Alan Foster
- Joe Miles
- Wes Delks
- Dr. Bronson Strickland
- Jake Ehlinger
- Sam Collora
- Derek Borkholder
- Don Higgins and more...

**Writers guidelines:**  
**Don Higgins**  
 don@whitetaillife.com

**Article submissions:**  
**Derek Borkholder**  
 derek@whitetaillife.com  
 800-414-0686

**Advertising:**  
**Joas Yoder**  
 joas@whitetaillife.com  
 574-399-0424

Mail this form and payment to:  
**Whitetail Life, PO Box 3, Charm, OH 44617**  
 Call 330-204-9199 with credit card information  
 email this form to: [sales@whitetaillife.com](mailto:sales@whitetaillife.com)

### Whitetail Life Subscription Form

Name: \_\_\_\_\_

Address: \_\_\_\_\_

Phone: \_\_\_\_\_ Fax: \_\_\_\_\_

Email: \_\_\_\_\_ Signature: \_\_\_\_\_

**Subscription:**  
**USA:**

**\$19.99** 1 year  
**\$37.99** 2 years

**Canadian:**

**\$49.99** 1 year  
**\$97.00** 2 years

Bi-Monthly Magazine:  
 6 Issues Per Year

*Your subscription will automatically renew with the payment method provided unless you cancel it.*

Check box to cancel auto renew

**PAYMENT INFO:** INV # (office use only): \_\_\_\_\_

Check# \_\_\_\_\_ AMT: \_\_\_\_\_

Type of card:  American Express  Visa  MasterCard  Discover

Credit Card#: \_\_\_\_\_

Name (as it appears on the card): \_\_\_\_\_

EXP: \_\_\_\_\_ CVC CODE (on back): \_\_\_\_\_

Phone #: \_\_\_\_\_ (required for credit card use)



UNEEDA

Helping you  
achieve better  
sanding results  
since 1967

Booth #477

[www.uneeda.com](http://www.uneeda.com)



AUTOMATION - CONTROLS - STARTER PANELS

PROGRAMMING

HMI - PLC - VFD - SMART RELAYS



AARON  
260-336-9127



SPECIALIZING IN THE SAWMILL/WOODWORKING INDUSTRIES

What's the best way  
to carve wood?

*Whittle by whittle.*

Booth 477 | Booth 1028

123

# MIDWEST Health & Wellness EXPO

# SPONSORS

## Platinum Sponsor



## Gold Sponsor

Asea  
First Choice Mattress  
ITC Immunity Therapy Center

Kauffman's Treasures LLC  
NucleoGenex  
The Wellness Way

## Silver Sponsor

Miller's Organo Coffee  
New Light Health  
Northern Nutrition

Rosewood Coffee Roasters  
Sisel  
True Essentials

## Bronze Sponsor

Dr. Ardsma's Vitamins  
J & J Eyewear / Fish Lake Variety  
JC Schrock Enterprises  
Michiana Dental Implants

Northern Indiana Hearing Center  
Riehl's Herbs  
Versiti Blood Center of Indiana

## Take Your Physical Health Seriously.

If I feel good. I usually do good, and taking care of your body is an essential part of doing your best daily.

Here are four things to better our health:

1. Drink plenty of water.
2. Sleep 7-8 hours daily.
3. Walk 30-45 minutes daily.
4. And eat nutritiously.

### The First Three Are Free.

*You either discipline your health or it will discipline you.*

# DPA TESTING

Digital  
Pulsewave  
Analyzing



**VistaLife**™  
PEOPLE. PRODUCTS. PROSPER.

Find out the condition of your arteries with this  
**SIMPLE • NON-INVASIVE • SAFE TEST**



This Test Measures:

- Heart Rate and Ejection Time
- Arteriosclerosis
- Artherosclerosis
- Grades Vascular System
- Gives Biological Age of Arteries
- Overall Cardiovascular Health

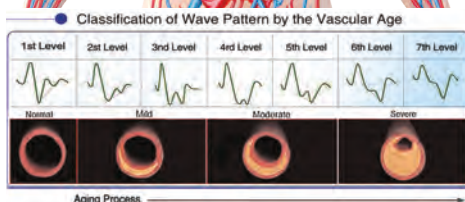
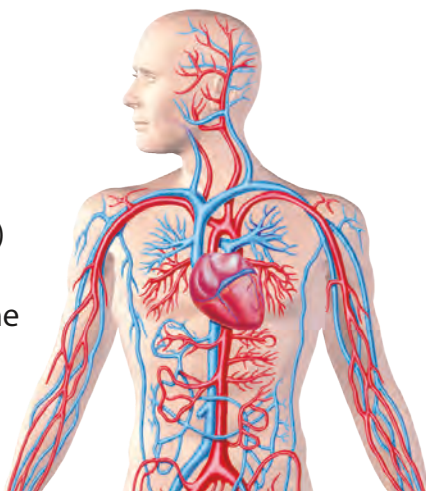
**DPA Test Value \$500**  
**\$20.00 per test or**  
**\$30.00 for 2 tests**

The Digital Pulse Analyzer (DPA) provides information on arterial wall stiffness and determines the biological age of arteries in less than 3 minutes.

**Join our monthly  
Auto Shipment for  
a chance to win  
\$50 in FREE products!**

**QUESTIONS?**

**Call: 716-488-6706**



NATURAL PRODUCTS TO HELP YOUR FAMILY THRIVE

Platinum Sponsor



YOUNG LIVING®  
ESSENTIAL OILS

Also Selling:



CALL OR STOP BY OUR BOOTH  
FOR A FULL LINE OF PRODUCTS

*Tension  
Tamer*

Owners: Clayton & Louise Lambright  
Ph: 260-463-0113 • info@tensiontamer.us  
4325 S 00EW • LaGrange, IN 46761

# Have you ever heard of Redox Cell Signaling Molecules?

It reverses aging, disease, and pain by turning back on your body's ability to heal itself.

- Improving **Immune System** Function
- Regulating **Inflammatory** Responses
- Improving **Cardiovascular** Health
- Promoting **Gut Health & Enzyme Production**
- Restoring **Hormone Balance**
- Reduces **Disease Risk Factors** by **Reducing Oxidate Stress** in 12 wks
- Proven to be completely **Safe** with **Zero Toxicity**
- Redox Gel **Increases Blood Flow** by **49%** when applied to an area in just 15 minutes
- Increases **Endurance**
- Increase speed of **Recovery**
- Increase burn of **Fat Fuels** up to 33%
- Boosts **Antioxidant Efficiency** by **500% to 800%** in just 72 hours
- Redox Gel **Reduces Muscle Discomfort**
- Redox Gel **Improves Skin Wrinkle Depth, Smoothness, Elasticity, & Texture**



*Redox Cell Signaling Molecules rebuilds your Damaged Cells, which is the cause of all Health Issues. Healthy Cells = Healthy body!*

## Redox Molecules helps with the following:

- Joint Discomfort
- Lung Conditions
- Genetic Disorders
- Kidney Problems
- Skin Disorders
- Neuromuscular
- Abnormal Cell Growth
- Memory
- Depression
- Tremors
- Cholesterol
- Fatigue
- Fertility
- Blood Sugar
- Anxiety
- Migraines
- Allergies
- Auto-Immune
- Spectrum
- Tick Bites

## FREE Testimonial Booklets at BOOTH 96

*Contact:* Ernie Chupp • 574-773-9404  
26659 CR 54 | Nappanee, IN 46550

realredoxresults.com  
(password: redox)

*Redox Supplement is not intended to diagnose, treat, cure, or prevent any diseases or medical conditions.*

Gold Sponsor

# REMEDY SLEEP

“My husband and I were both having back pain, and he also had pain in his legs. We were getting adjustments about every week to two weeks. We got this new mattress, and it took care of it. We love it!”

**J.W. - IN**



Shipped to  
Your Door



Hypo-  
allergenic



Memory &  
Gelcare  
Memory Foam

## First Choice Mattress LLC

Freeman & Linda Troyer  
6838 Cutter Rd, Apple Creek, OH 44606  
Call for more info - (330) 698-1888



**ITC**  
Immunity  
Therapy Center



**More than Alternative Medicine To  
Help You Fight Your Battle With  
Cancer and Other Diseases.**



Dr. Carlos Bautista takes pride in going above and beyond to deliver the best treatment, and an outstanding experience, to every patient.



Xiao Pei  
**Cancer Survivor**

ITC saved my life. Now I can spend time with my family and enjoy the sunshine outside.



Immunity Therapy Center is proud to have state-of-the-art medical equipment of the highest quality, in a facility designed for our patients' needs.

*We have the most comprehensive treatment program designed to stimulate your immune system to recognize and destroy cancer cells in combination with natural, non invasive, effective therapies that will take advantage of cancer cells weaknesses.*



*Dr. Carlos Bautista*

**We treat all type of cancers in all stages, Autoimmune diseases, Chronic degenerative diseases, Infectious diseases and Lyme disease.**

**For over 25 years Dr. Carlos Bautista has been treating patients from the Amish community with remarkable results.**

**Let us help you get started on your path to recovery (619) 929 3430  
[www.immunitytherapycenter.com](http://www.immunitytherapycenter.com)**

Gold Sponsor

# SUPPORT IMMUNITY NATURALLY THIS SEASON!

TRY OUR COLD & FLU RESPONSE PRODUCTS!

NEW NEW NEW NEW NEW NEW NEW NEW NEW



## Quick Defense

GAIA HERBS

Fast-acting formula for supporting immune response at onset.  
80 caps - **\$50.72**



## Rocky Mountain Throat Syrup

HERBS ETC.

Promotes sinus, throat, bronchial, and lung health. Soothing cough syrup for adults and children.  
8 fl oz - **\$21.74**



## Hybrid CR

HYBRID REMEDIES

For seasonal immune challenges - relief in only 4 days!  
30 caps - **\$27.84**



## Immunomax

NUTRITIONAL FRONTIERS

ImmunoMax features herbs and nutrients targeted at supporting immune function during acute illness.  
60 ct - **\$35.60**

# 20% OFF

## Quick Defense!

AT EXPO ONLY

STOP BY OUR BOOTH TO PICK UP YOUR

# FREE CATALOG

# KAUFFMAN'S

Natural, organic, specialty products

TREASURES LLC

HEALTHY TREASURES, FOR A HEALTHY LIFE

TOLL FREE 1.877.840.0053

P. 440.437.3600 | F. 330.647.6101

2428 HAGUE ROAD | ORWELL, OHIO 44076

# NücleoGenex

THE **ULTIMATE**

## GUT HEALTH TRIAD

Especially designed to SEAL your Leaky Gut!



95% of Diseases begin in your Gut...  
Anxiety, Depression, Fatigue, IBS, Brain Fog,  
AND SO MUCH MORE!!



DNA TESTING... THEN, CUSTOMIZED UTRITION  
To feed your weak, mutated genes. NO MORE GUESSING,  
what your body needs, now you know!!

EASY TO DO!  
IN-HOME DNA TEST

CUSTOMIZED  
**UTRITION**

Gold Sponsor

ORGANIC  
**INFRARED**  
ROASTED

## COFFEE

Infrared Roasted meaning the beans never touched any fumes, or flames, therefore non acidic! Also COFFEEBERRY infused which is really high in antioxidants, meaning its amazing for your mood and well being! You're gonna have to stop at our booth and give this wonderful coffee a try!!



For more info:

Arlen & Fannie Erb 740.552.1287. 26841 SR 621. Fresno, Ohio 43824



# THE WELLNESS WAY

Do Health Differently.

**Stop by Booth  
#103/104 for  
More Info**

## WHAT IS THE WELLNESS WAY?

We are a network of Health Restoration Clinics that think and act differently to solve the health challenges others can't. Our philosophy is founded on the idea that the human body was not designed for illness, and when properly cared for, can restore its innate ability to heal.

At **The Wellness Way**, we understand that "common" is not "normal", and unlike the restrictive healthcare mentality, we dig deeper to find answers to life-restricting health challenges.

We focus on overcoming the three main causes of interference in the body: trauma, toxins, and thoughts. We utilize the most in-depth testing and cutting-edge diagnostic tools to get to the root of your health problems.

### OFFERING

**DRAWING GIVEAWAYS  
& 25% OFF ALL BOOKS**

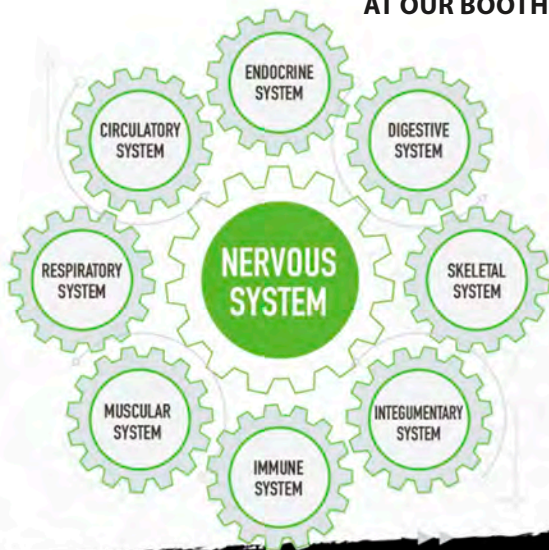
**AT OUR BOOTH**

## PRACTITIONERS: ANDREW COBLENTZ NAOMI TROYER



### THE SWISS WATCH PRINCIPLE

THIS IS HOW THE BODY WORKS!



250 E. Berkshire Dr. Unit 4 • Shipshewana, IN 46565

260-593-1560

[www.thewellnessway.com](http://www.thewellnessway.com)

Gold Sponsor

# WORLD'S LEADING BRAND OF *Ganoderma Based Products*

OG PRODUCTS PEOPLE LOVE

Royal Black Coffee  
Black Coffee  
King of Coffee  
Café Latte

Café Supreme  
Café Mocha  
Organic Green Tea  
Organic Red Tea

Gourmet Hot Chocolate  
Beu Skincare  
Premium Beauty Soap  
Smile Organo Toothpaste



## MILLER'S ORGANO COFFEE

Ph: 608-943-6335

Dan & Rebecca Miller

S-5841 County Rd D  
Rock Springs, WI 53961

## Wellness To Your Door®



### DISCOVER WHAT WE OFFER:

- Free wellness catalog with educational articles
- Free shipping on orders over \$49
- Same day shipping on orders placed by 3 PM EST
- Over 3,000 items in stock
- Friendly staff standing by ready to take your call



Scan the QR code to download our  
**FREE WELLNESS CATALOG**  
or contact us to request a print copy

CALL/FAX/TEXT: 717-692-3500  
EMAIL: [orders@NewLightHealth.life](mailto:orders@NewLightHealth.life)

P.O. Box 80  
Elliottsburg, PA 17024

Silver Sponsors

# NORTHERN NUTRITION

HERBS & VITAMINS

COME SEE US AT BOOTH # 34-35!



20% OFF ALL SUPPLEMENTS AT EXPO!

Our Naturopaths will be available to answer your questions!

20% OFF!

STOP IN TO SEE US!



2195 N 700 W Shipshewana, IN 46565  
260-768-4868

Silver Sponsor



fresh coffee. pure & simple

## OUR MISSION

To provide good quality, fresh roasted coffee along with brewing equipment and hassle free shipping.



## OUR COFFEE

We source good quality, fresh crop green coffee and store it in climate-controlled conditions. All coffee is shipped as whole beans unless requested otherwise, with no additives or flavorings.



3680 Oak Hill Road, Stockport, OH 43787 | Ph: (740) 629-2592 | Fax: (740) 510-1210

Come see us at our booth for show specials and info on SISEL products!

check out our skincare line



LOOK US UP AT  
BOOTH # 81&82



**Brain VITALITY**

- Supports brain function
- Improves memory and focus
- Supports healthy aging
- Supports healthy blood flow
- Supports healthy cholesterol levels
- Supports healthy blood pressure
- Supports healthy blood sugar
- Supports healthy blood vessels
- Supports healthy blood circulation
- Supports healthy blood flow
- Supports healthy blood pressure
- Supports healthy blood sugar
- Supports healthy blood vessels
- Supports healthy blood circulation




Christy Lydia Lambright  
6605 W US 20  
Lagrange, IN 46761  
260-293-3144  
Booths 81 - 82

Discover the missing vitamins your body desperately needs.  
*Rethink Aging. Reimagine Life!*

[www.GetTheVitamins.com](http://www.GetTheVitamins.com)  
15% off code: MIDWEST



Jennifer Hall  
217-803-0212  
Dr. Aardsma's Vitamins



*Be a Beacon of Hope*

When you donate blood with Versiti  
Blood Center of Indiana, you impact the lives  
of local hospital patients in need, possibly even  
someone you know.



Scan to  
donate blood.

versiti  
Blood Center of Indiana

Booths 81 - 82 | Booth 70 | Booth 65

135

Silver Sponsor

Bronze Sponsor

# NIHC

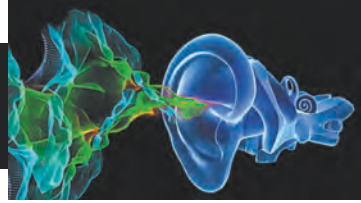
Northern Indiana Hearing Center  
Captioned Telephone: 574-383-5595

Visit us at booth #33 during  
**The Midwest Health  
& Wellness Expo**  
January 23, 24, & 25, 2025



**FREE EAR INSPECTIONS**  
**Enter a drawing to win**  
**a free pair of hearing aids!**

Licensed Hearing Specialists • Captel Provider



JC Schrock  
Enterprises

**260-854-2061**



**8 Different Model Options Available**

Prices Ranging from  
**\$2150-\$6450**

We also have:

- Neck Massagers
- Foot Massagers
- Massaging Chair Pads
- Massage Guns

Bronze Sponsor



We will have a display of over 200 frames to look at. Also nose pads, screws, cleaners & cleaning cloths.

We can do single vision, bifocals, trifocals, & progressive lenses. So you may bring your valid prescription & order a pair of glasses.

We can send them to you or they can be picked up at our address.

## J & J EYEWEAR

James Hilty · 260.463.4097 x1  
1425 S 400 E · LaGrange, IN 46761

# Riehl's Herbs

Bulk Herbs | Tincture Kits | Salve Kits

*Make your own and save!* Shipping available.

Samuel Riehl | 260-768-9109 x2  
0160 N 600 W | LaGrange, IN 46761







**Essentials For Life**

Provide your body with the strongest nutritional foundation possible with the finest natural, whole food, full spectrum nutritional system. A MUST for your gut health!



**Royal Essentials**

Targeting improved circulation with premier chelation and antioxidant ingredients. Takes out heavy metals, mineral deposits, and more!



**Living Water Machine**

A pH balancing, healthy alkaline water filter that connects to your sink and is used for drinking, cooking and even cleaning purposes. The healthiest water for you!



**Vollara<sup>®</sup> Air & Surface Pro**

Advanced surface and air purification proven to reduce over 99.9% of many common airborne and surface contaminants. Fights molds, viruses, and allergens!

## A healthy habit to have is to drink water; 8 glassfuls a day.

- It suppresses your appetite.
- It helps flush toxins from your body and stimulates blood flow.
- It keeps the digestive system in working order.
- It keeps your skin from dehydrating. Less wrinkles.
- It energizes your muscles and moisten.

**STOP BY OUR BOOTH  
FOR SHOW SPECIALS!**

# LEHMAN'S VARIETY STORE



**versa · tote**



**2825 W 350 S  
LaGrange, IN 46761  
260.463.7469  
Fax: 260.463.4184**

**Visit our Store:  
Monday - Friday : 7:30 am - 4:30 pm  
Saturday: 7:30 am - 3 pm**



PRESORTED  
STANDARD  
US POSTAGE PAID  
SHIPSHEWANA, IN  
PERMIT #22

RETURN SERVICE REQUESTED

# MIDWEST Health & Wellness EXPO

January 23, 24 & 25, 2025

The Michiana Event Center (MEC)  
455 E Farver St., Shippshewana IN 46565

Sponsored By:



*Sension  
Tamer*

MIDWEST  
  
**Tool Expo**  
& Auction

